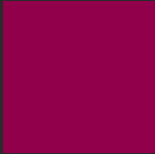


A unique integrated platform  
for minimally invasive  
Brain and Spine surgery



**medtech**  
INNOVATIVE SURGICAL TECHNOLOGY

# Corporate Presentation

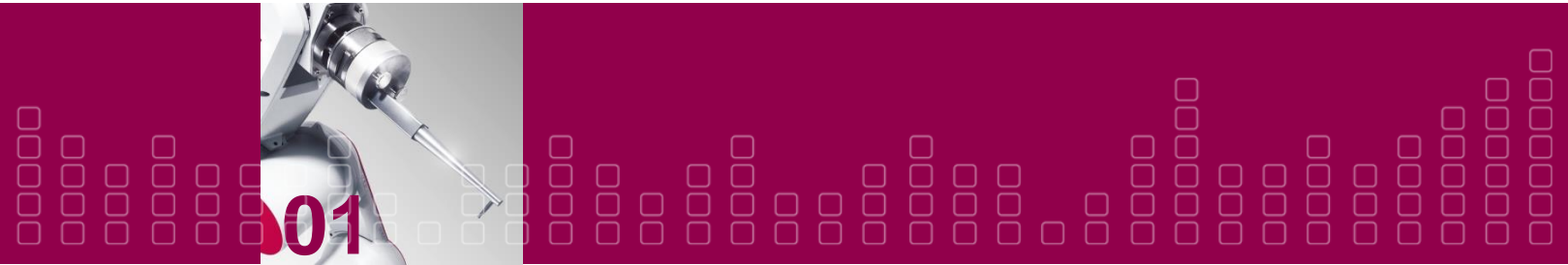
July, 2015



**Medtech Introduction**

**ROSA™ Brain**

**ROSA™ Spine**

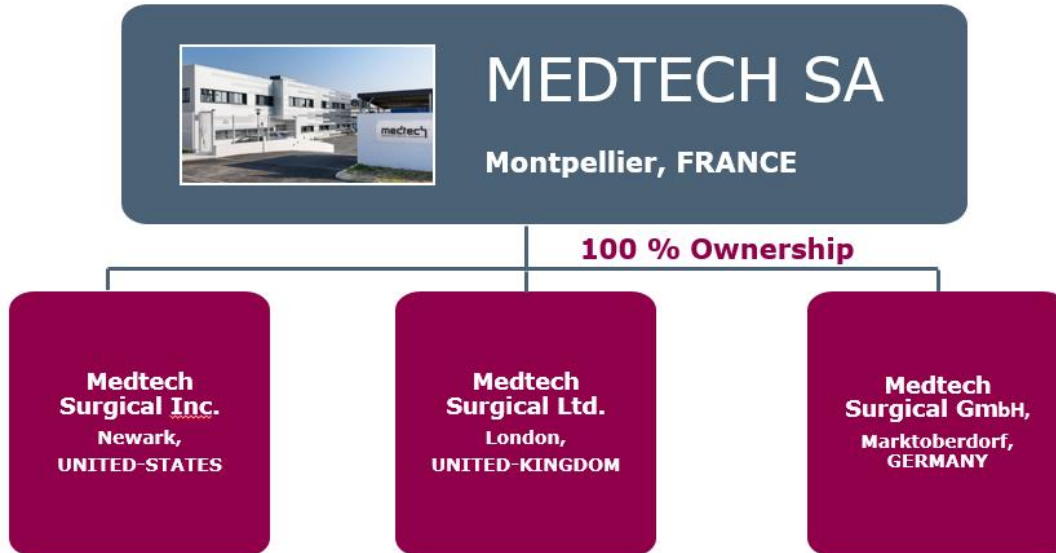


# Introducing Medtech

# Our Company



Medtech is dedicated to designing, developing and marketing a new generation of robotized solutions for medical and surgical treatments.



**Medtech is a public company listed on NYSE Euronext Paris (Ticker: ROSA).**

# Our Mission



## Goal

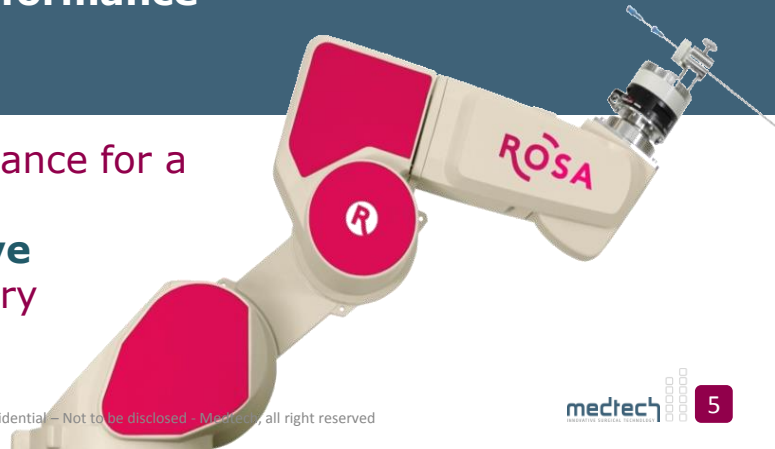
- Create and market **innovative** robotic solutions for **less invasive, more accurate** surgery

## Stakes

- To increase patient **safety**
- To **assist** and **enhance reliability** of the surgical act
- Improve hospital **performance**

## Ambition

- Develop robotic assistance for a safer, faster approach in **minimally invasive** brain and spine surgery



# Over a decade of innovation and success



## 2016 > 2017

- FDA Approval of **RÒSA™ Spine**
- Expected revenue for FY 2016: €20 M
- **RÒSA™**  
Installed base: 80 systems worldwide

## 2014 > 2015

- CE Marking of **RÒSA™ Spine**



## 2010 > 2013

- **RÒSA™ Brain**  
Installed base: 21 systems worldwide
- November 2013: IPO



## 2007 > 2009

- 2<sup>nd</sup> robotic solution from Medtech dedicated to brain surgery

### RÒSA™ Brain



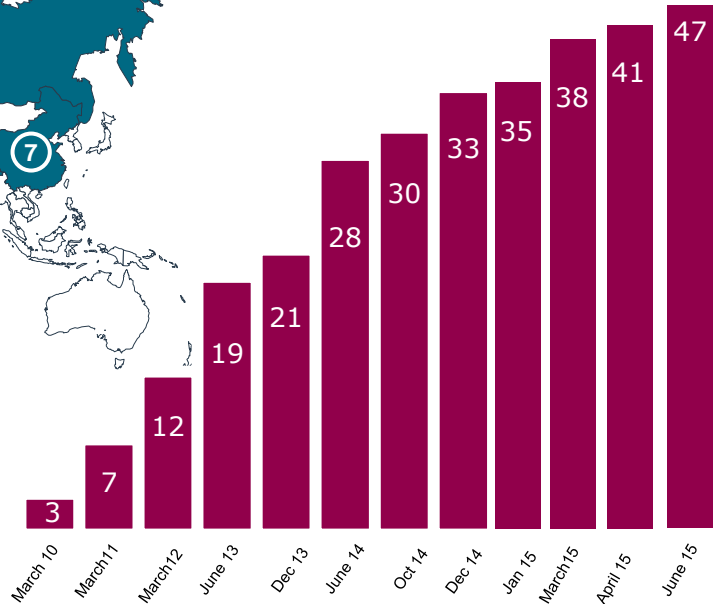
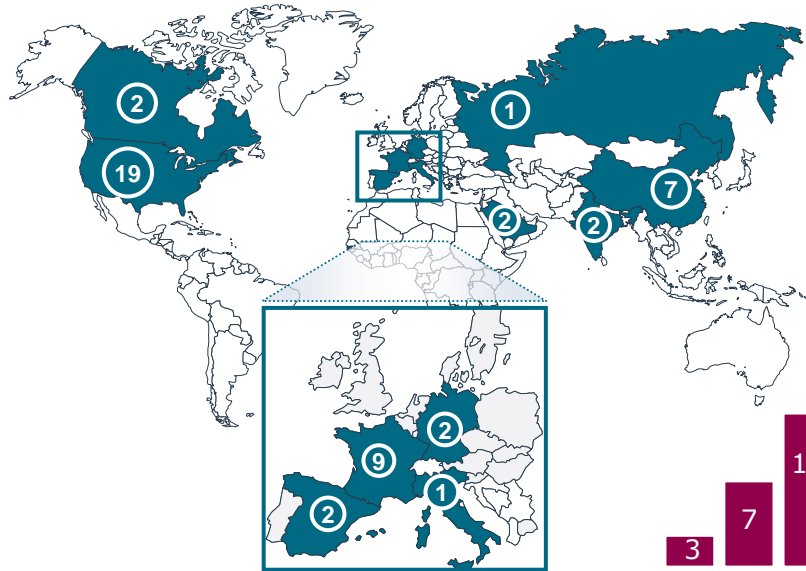
## 2002 > 2006

- **BRIGIT™**: 1<sup>st</sup> robotic solution from Medtech for knee surgery



- CE marked and FDA approved
- Sold to Zimmer Inc. in 2006

# ROSA™ Brain Installed Base



Evolution of the installed base.



**A FLEET of 47 INSTALLED ROBOTS** as of June 2015.



# ROSA™ Brain

Robotic Surgical Assistant  
for Minimally Invasive Brain Procedures



# ROSA™ Brain Multi-applicative platform



## ROBOTIC GUIDANCE



Accurate positioning with 6 degrees of freedom

## PRE-OPERATIVE PLANNING



Planning on CT/MRI images

## REGISTRATION



Automatic and Contactless

## EASY MANIPULATION



Haptic shared control



## NAVIGATION



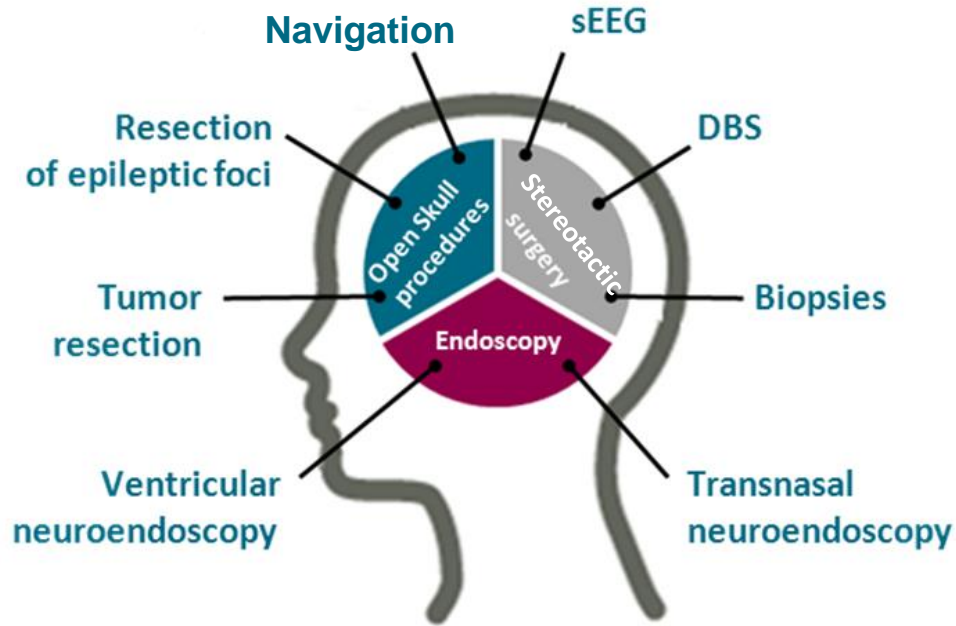
Real-time instrument position in the images



Robotic assistant for neurosurgery.

**Guidance, handling, and instrument navigation based on surgical planning.**

# ROSA™ Brain Procedures Covered\*



Over 80% of brain applications covered

(\* ) Subject to local clearances



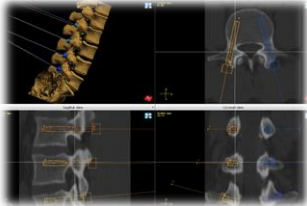
# ROSA™ Spine

Robotic Surgical Assistant  
for Minimally Invasive Spine surgery

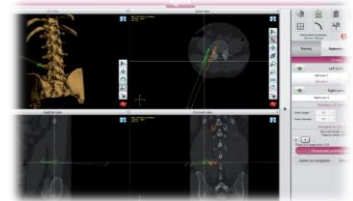
# ROSA™ Spine Platform Description



## SURGICAL PLANNING



## ASSISTED NAVIGATION



## DYNAMIC GUIDANCE

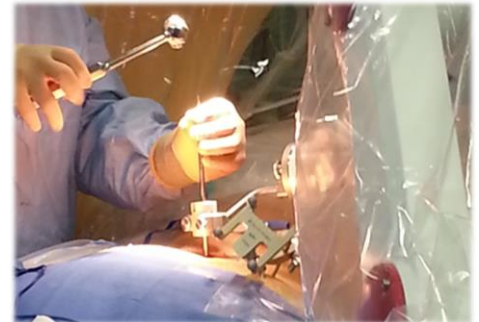


*ROSA™ Spine is not currently licensed for sale in Canada or cleared for sale in the United States.*

# ROSA™ Spine Specifications

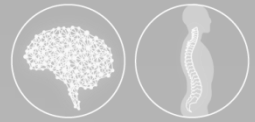


- **Indication for use:** Pedicle screw placement for lumbar spine surgery.
- **Approach:** Minimally invasive and percutaneous surgery (posterior approach).
- **Imaging system compatibility:** 3D intra-operative imaging system





A unique integrated platform  
for minimally invasive  
Brain and Spine surgery



Thank you for your attention



**medtech**  
INNOVATIVE SURGICAL TECHNOLOGY