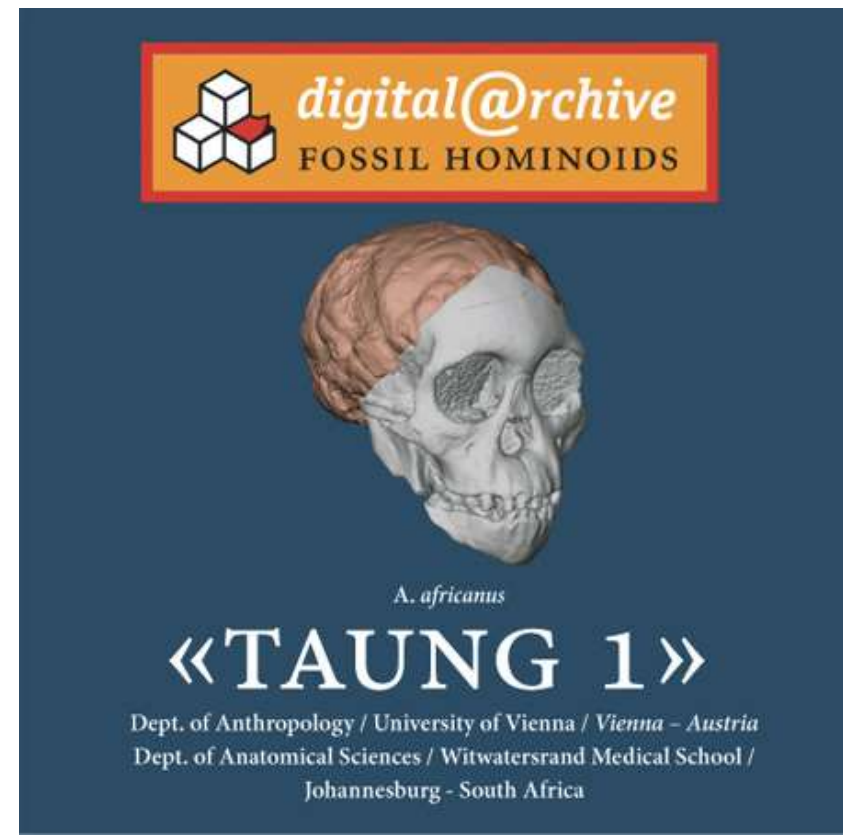
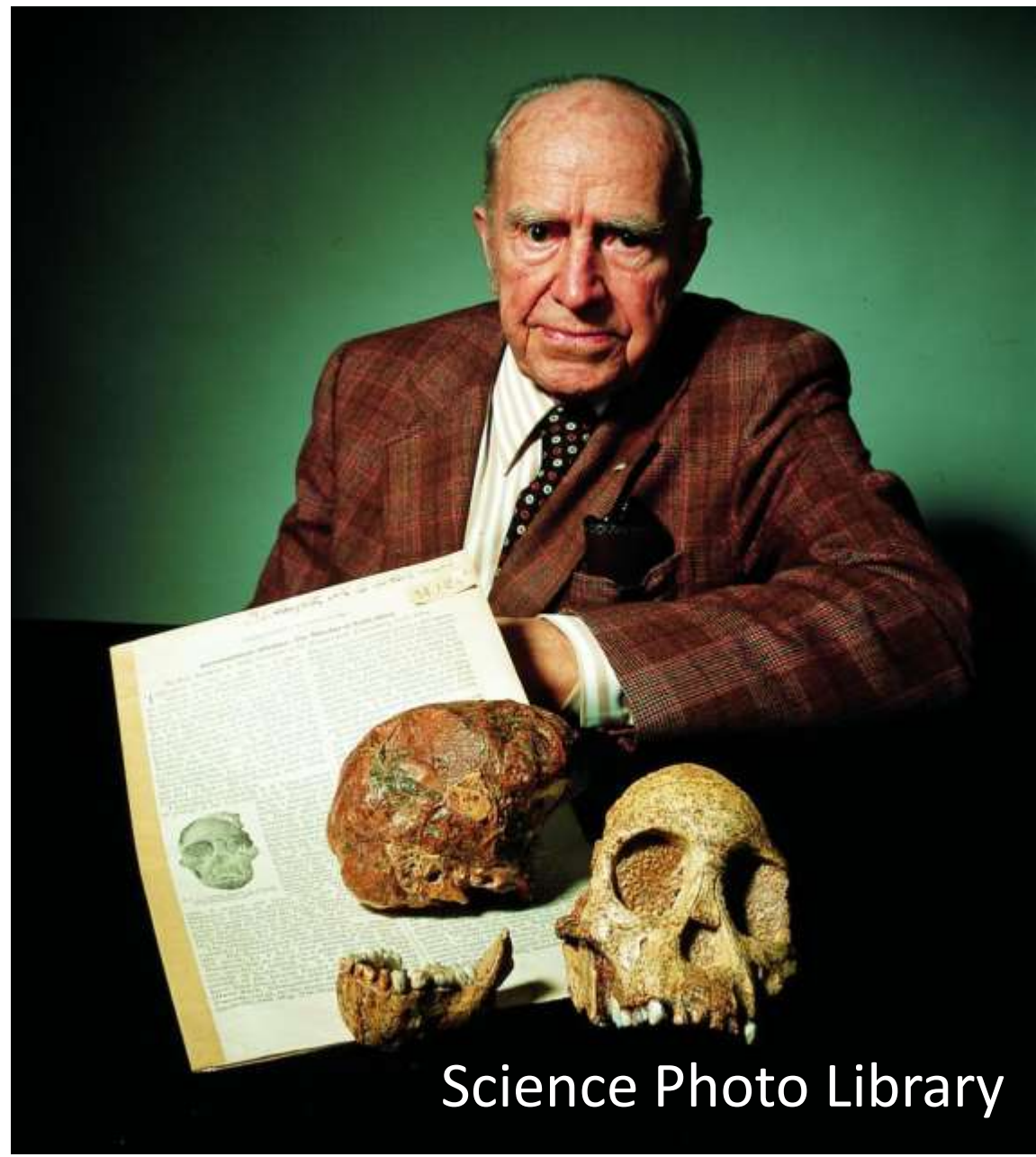


Comparison of endocranial and ectocranial “symmetry planes” and application to the virtual reconstruction of the Taung Child

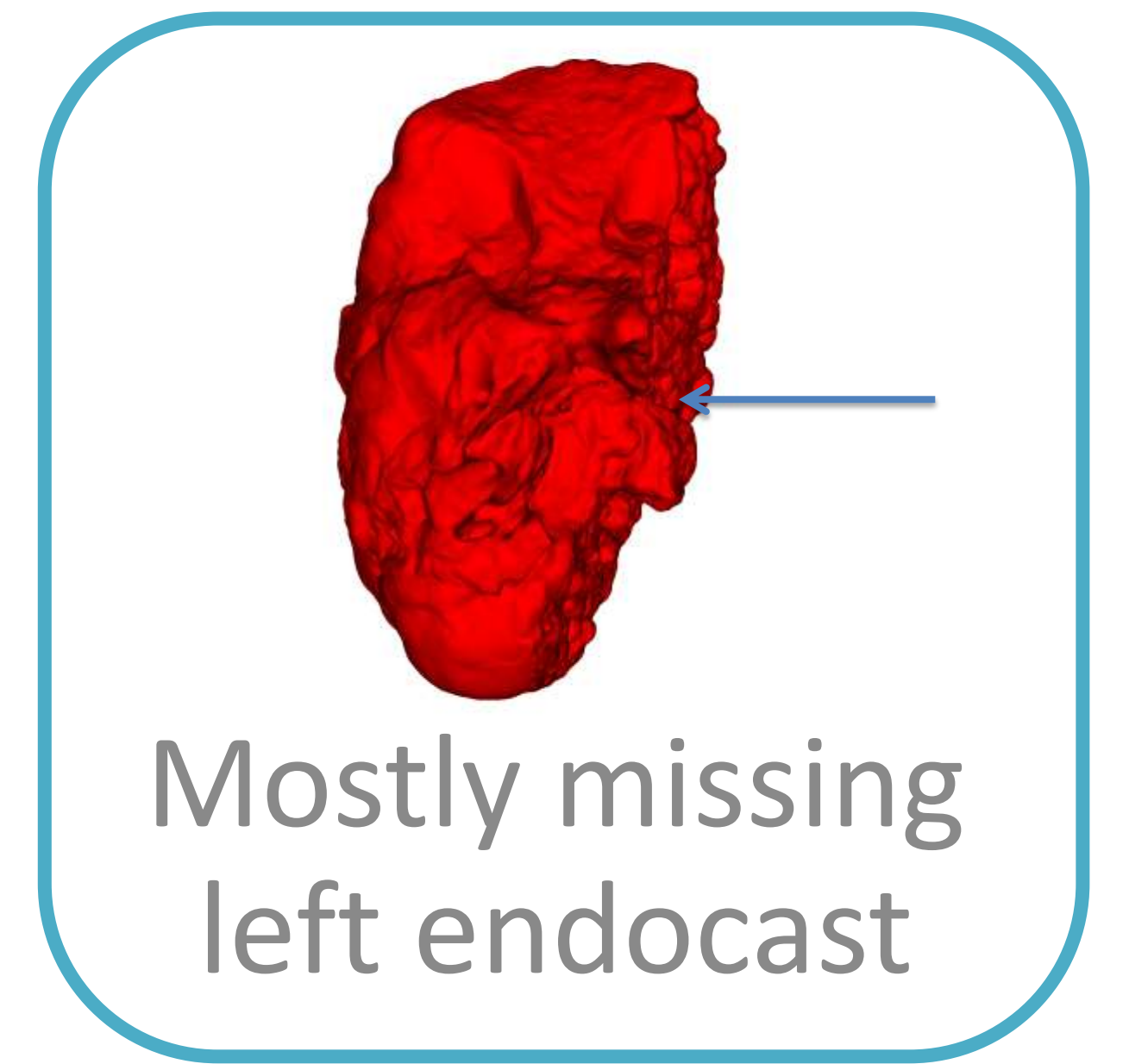
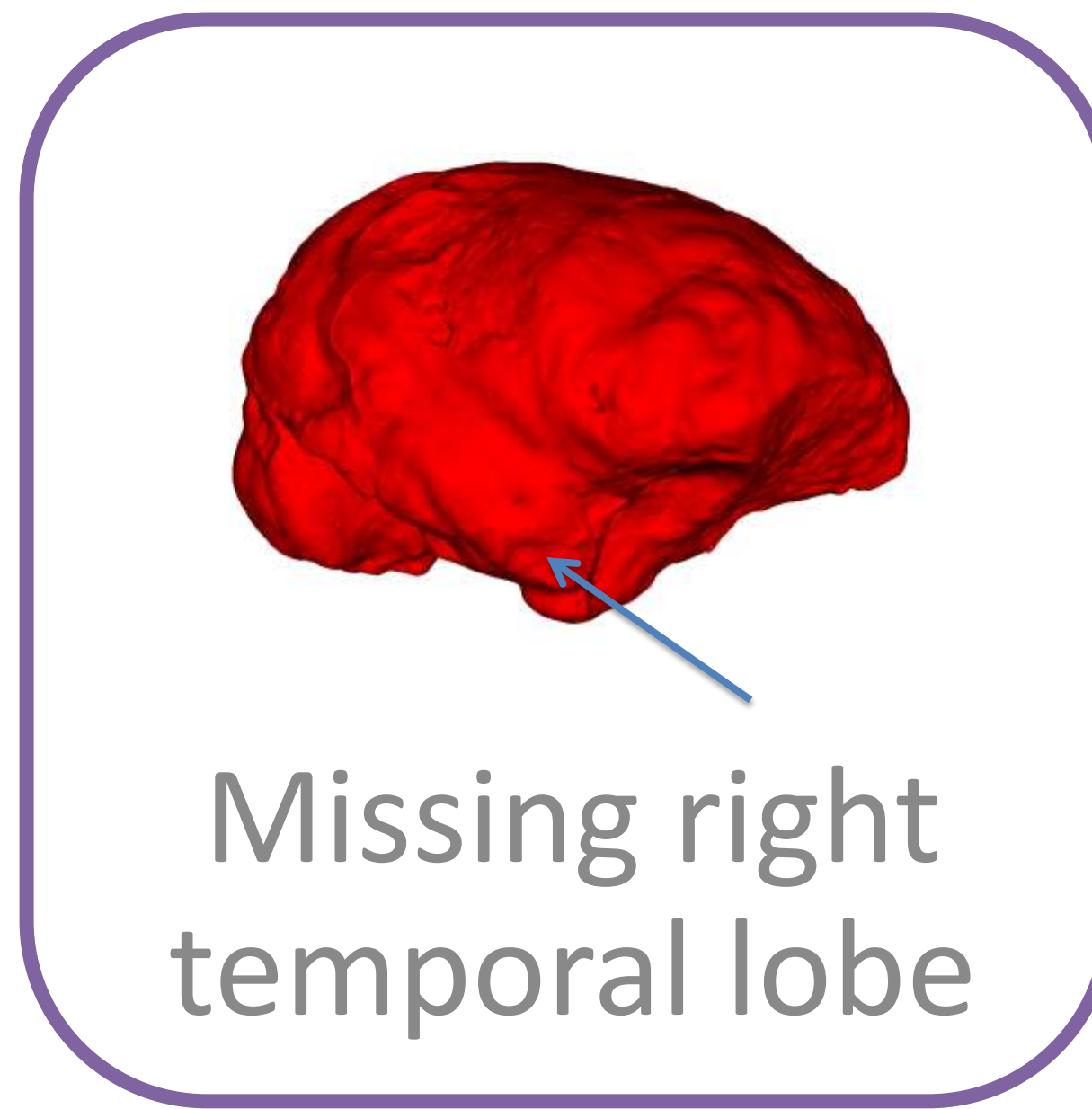
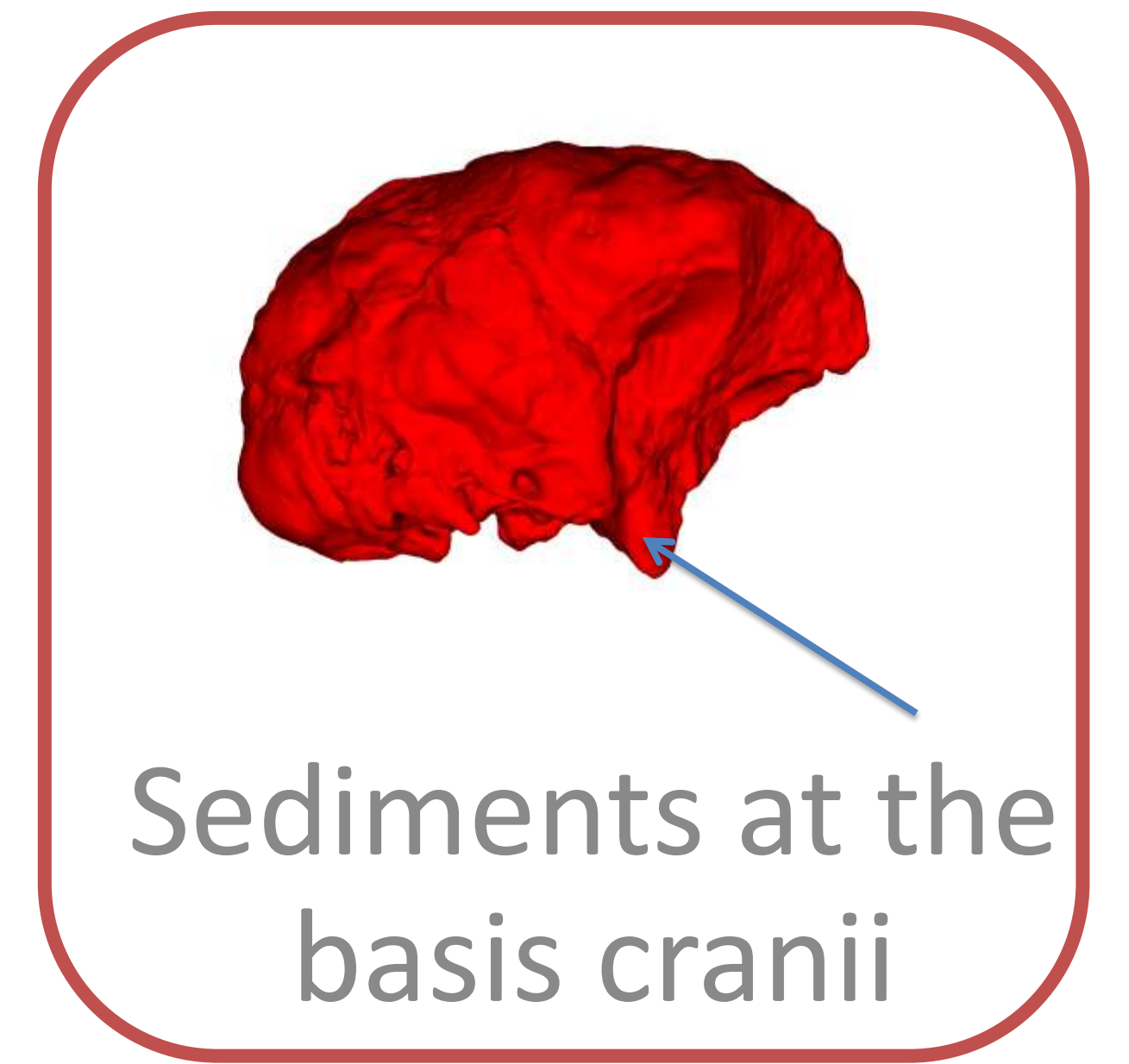
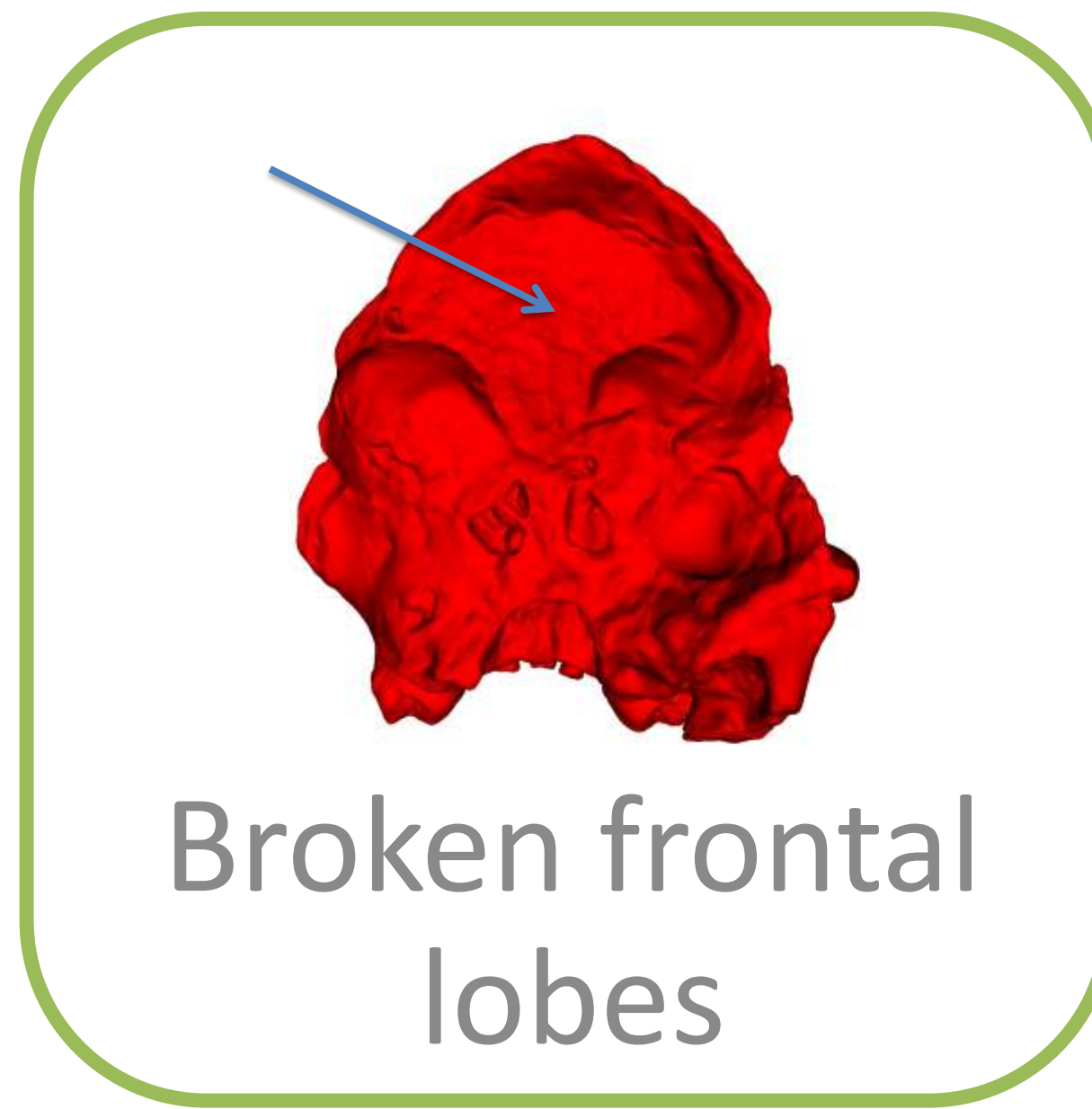
Sylvain Prima^{1,2,3}, Gérard Subsol⁴, José Braga⁵, Benoît Combès^{1,2,3},
Juan-Francisco Garamendi^{1,2,3}, Jean Dumoncel⁵ and Dean Falk^{6,7}

1. The specimen and the data:

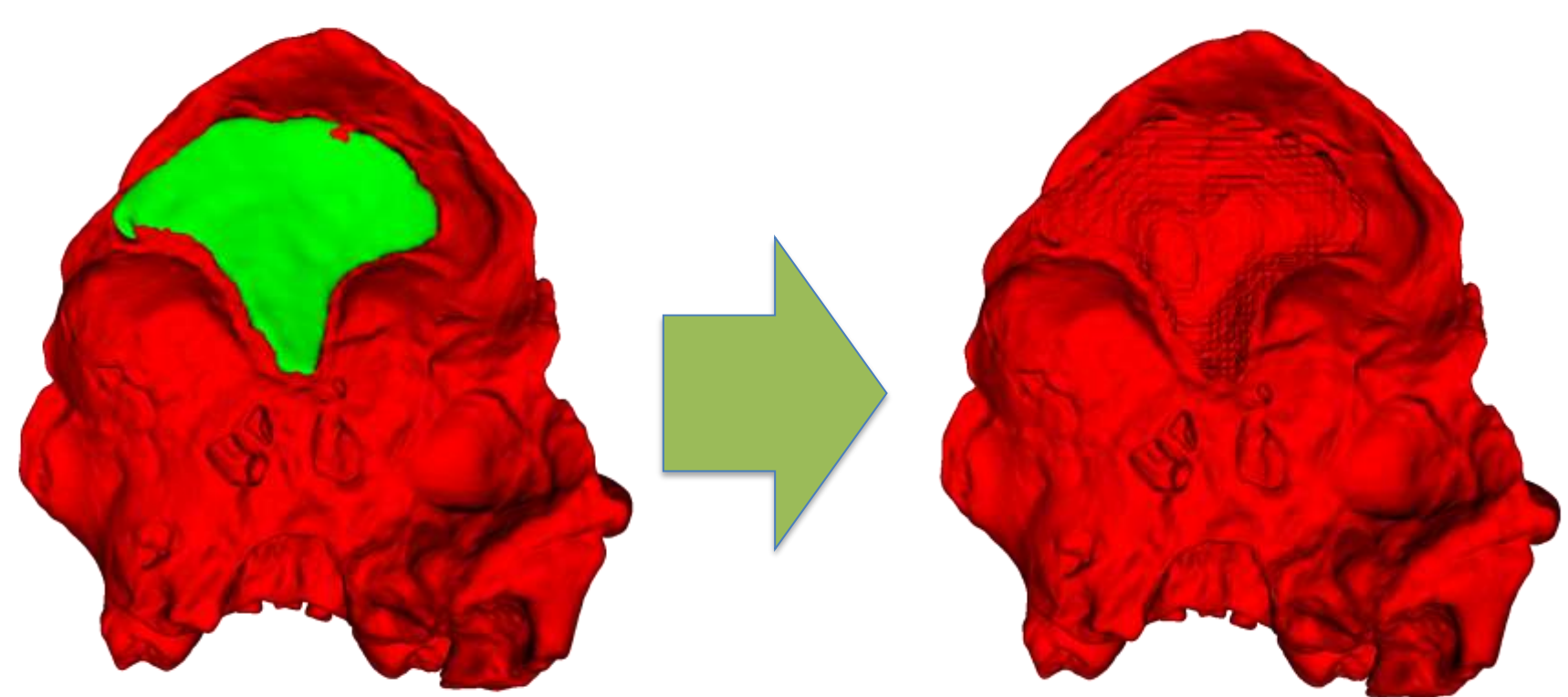


- Discovered in 1924
- Described by Raymond Dart
- About 2.8 millions y.o.
- Age: 3.3 years
- Species: *Aus. africanus*

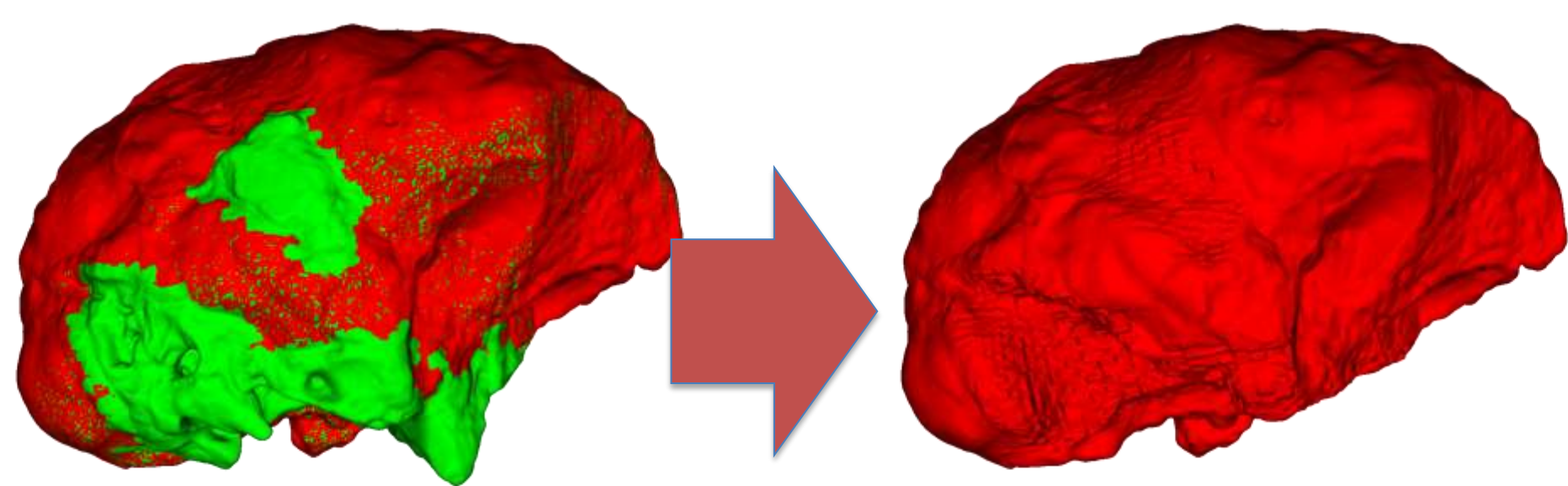
2. Four problems to solve:



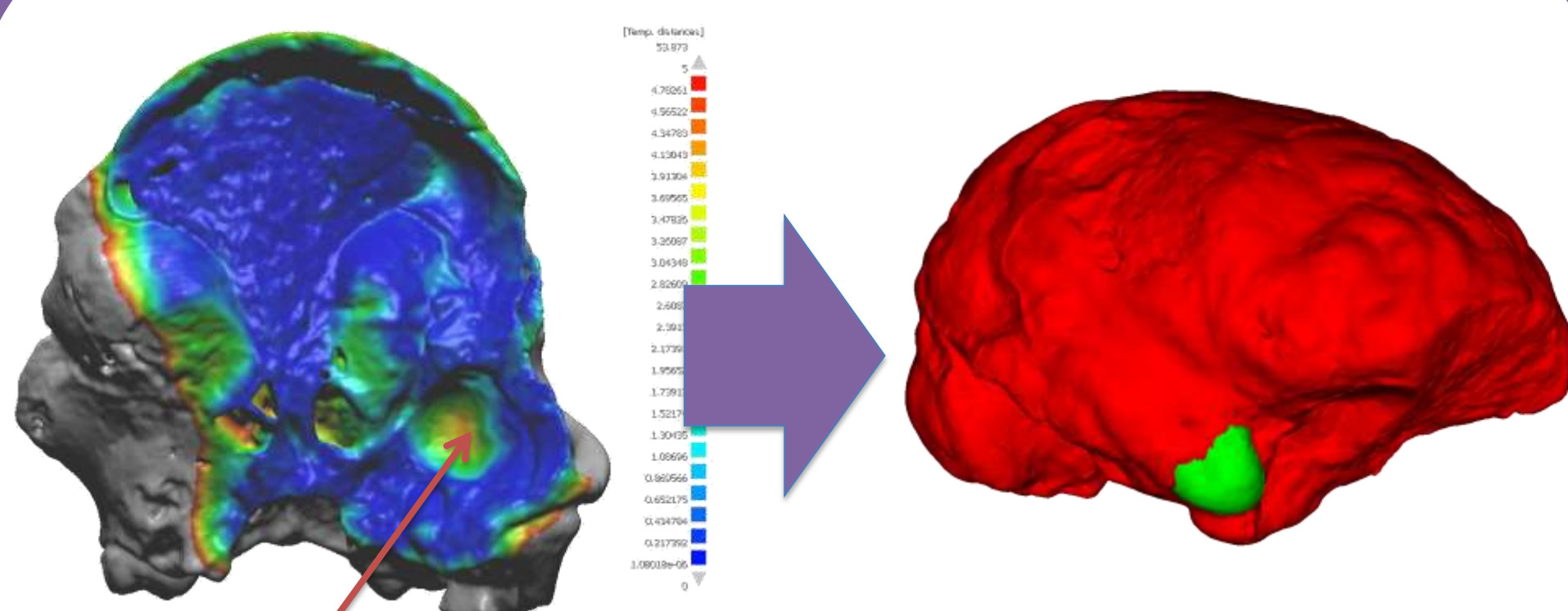
3. Proposition for Pb. 1-2-3:



Manual segmentation

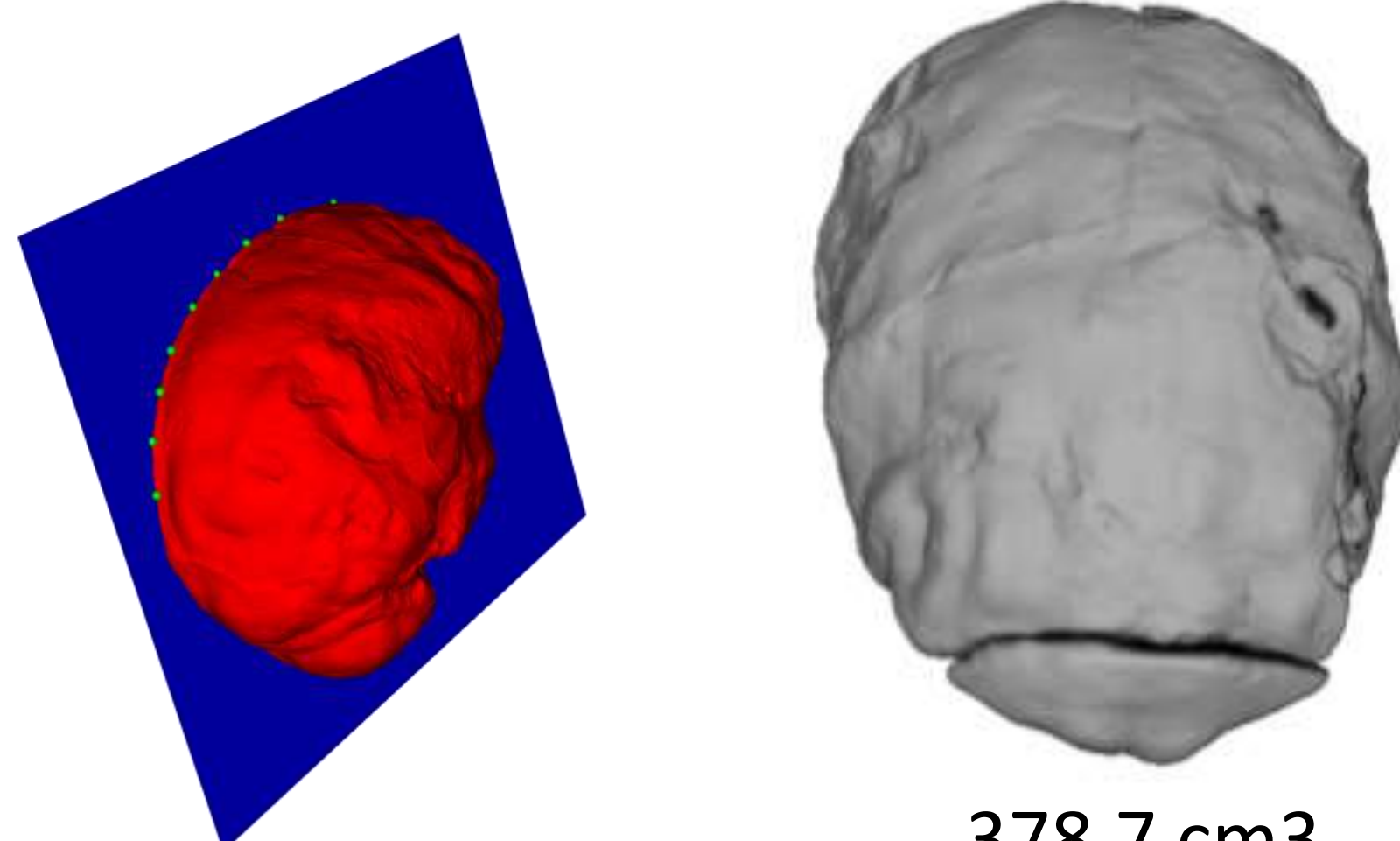


Manual segmentation

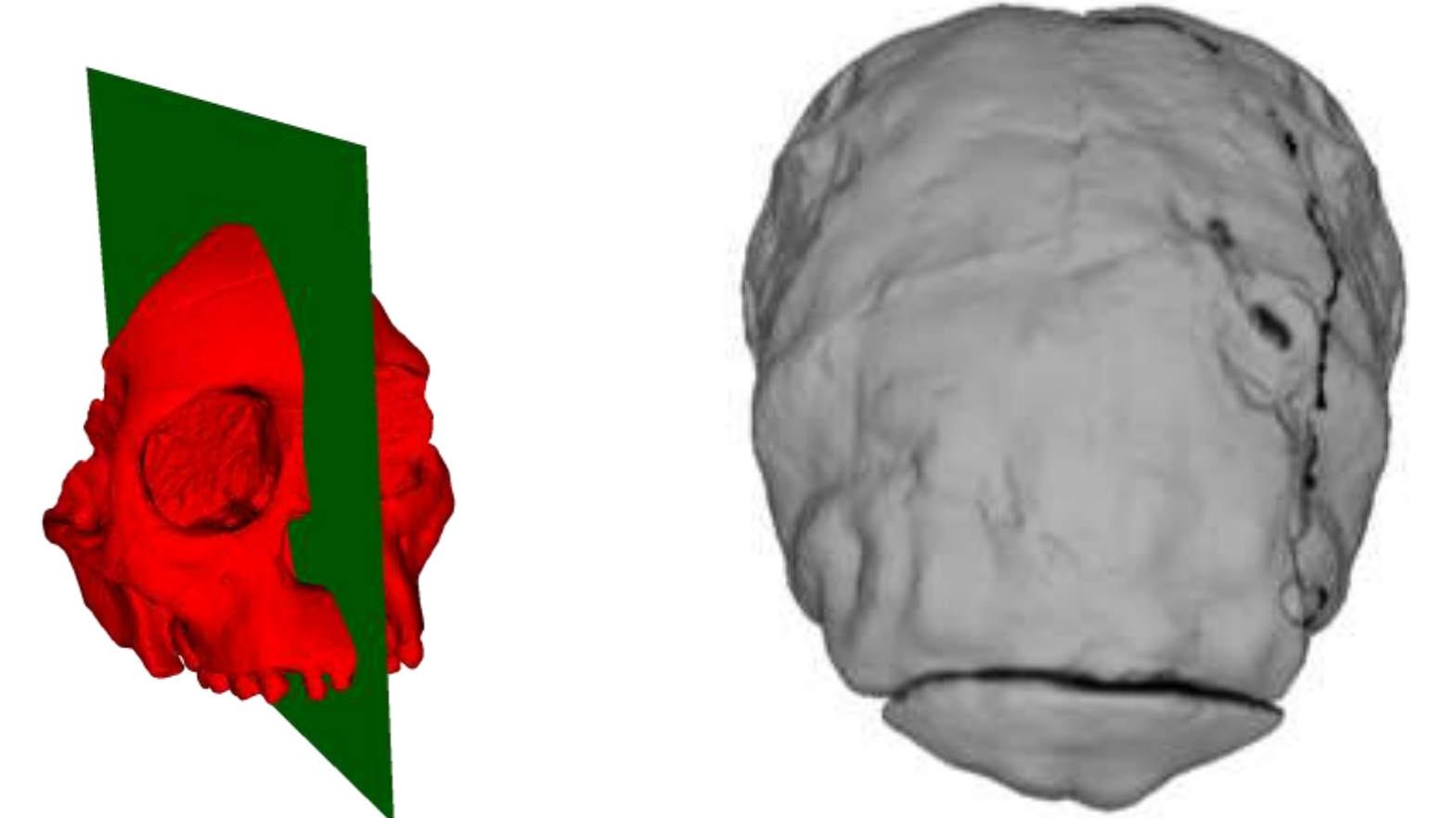


Virtual moulding by registration

4. Two possible solutions for Pb. 4:



Sol. 1: manual landmarks



Sol. 2: symmetry plane

