

# Do it mini-invasive !

## Impella Endovascular Ventricular Assist Device

M Karouia, Eng. PhD.

Surgical Robotics Summer School, Montpellier, 7 September 2007

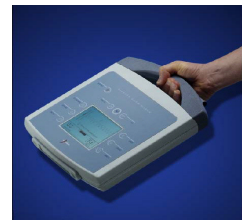
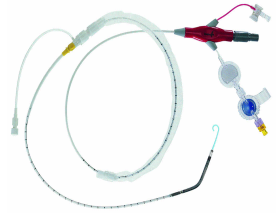


# ABIOMED

**Cath  
Lab**

*“Support”*

**Impella LP2.5/5.0**



**Surgery  
Suite**

*“Recover”*

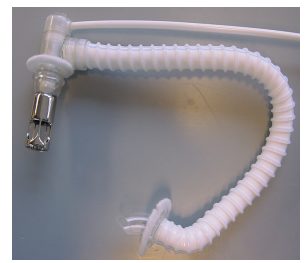
**BVS**



**AB5000**



**Impella RD**



**Impella LD**

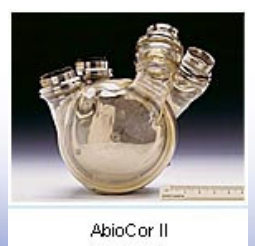


*“Replace”*

**AbioCor**



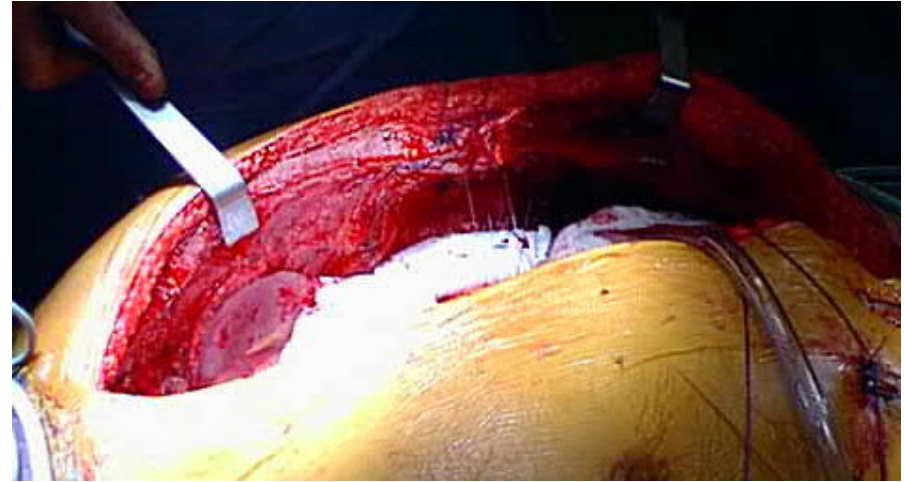
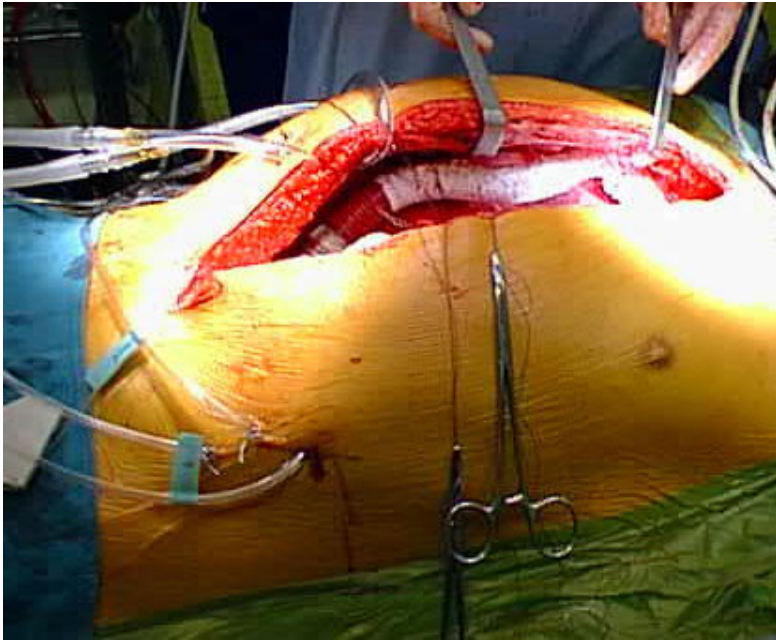
**AbioCor II**



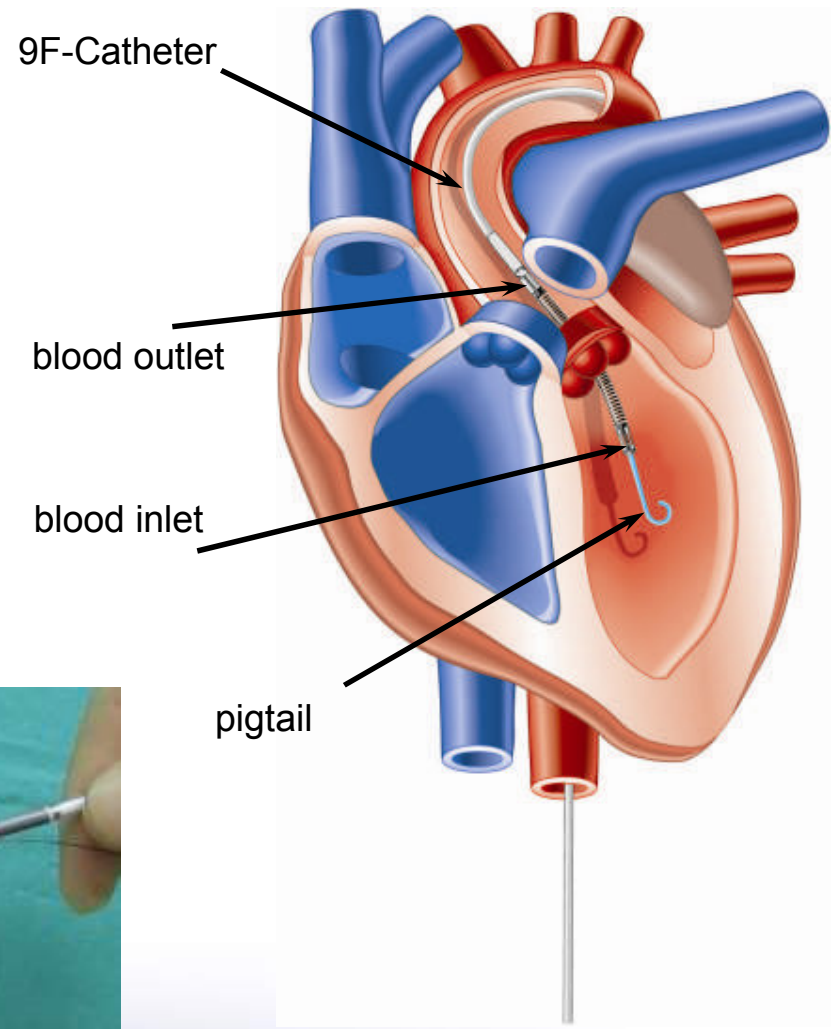
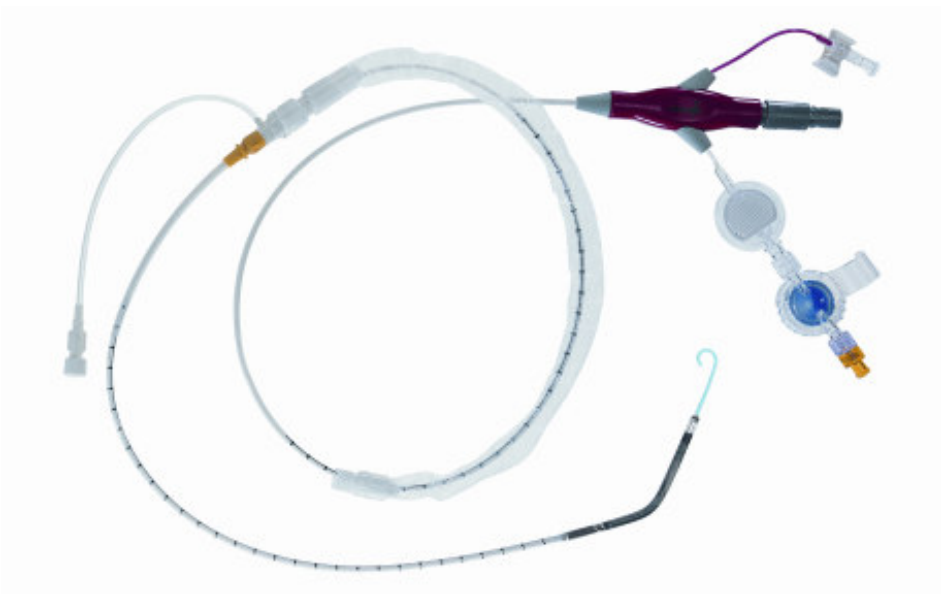
AbioCor II



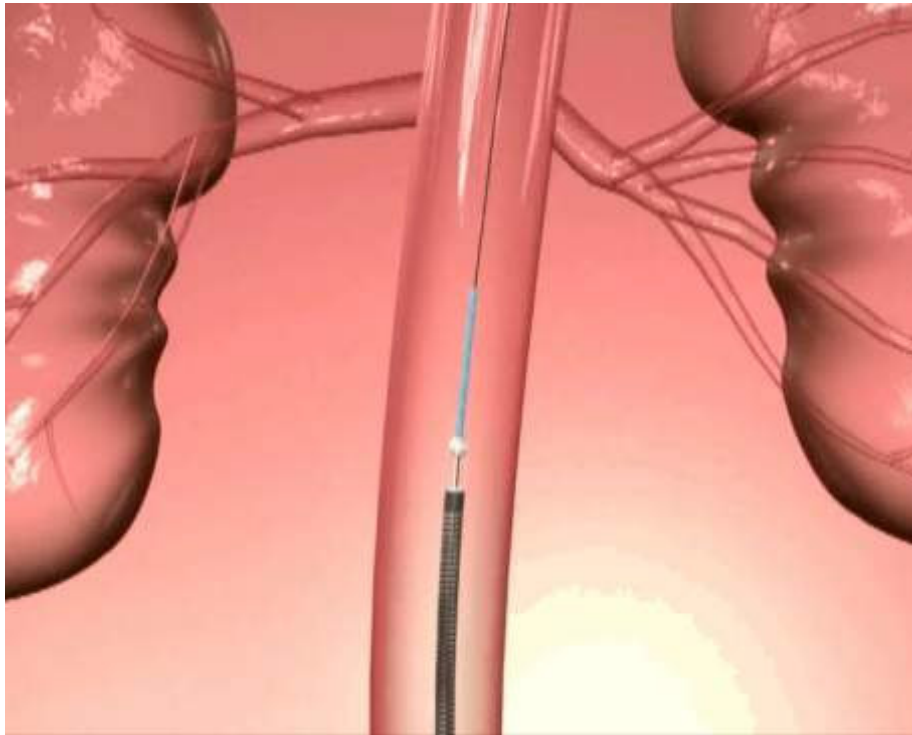
# Invasive VAD



# Mini Invasive VAD: Impella



# Impella LP2.5

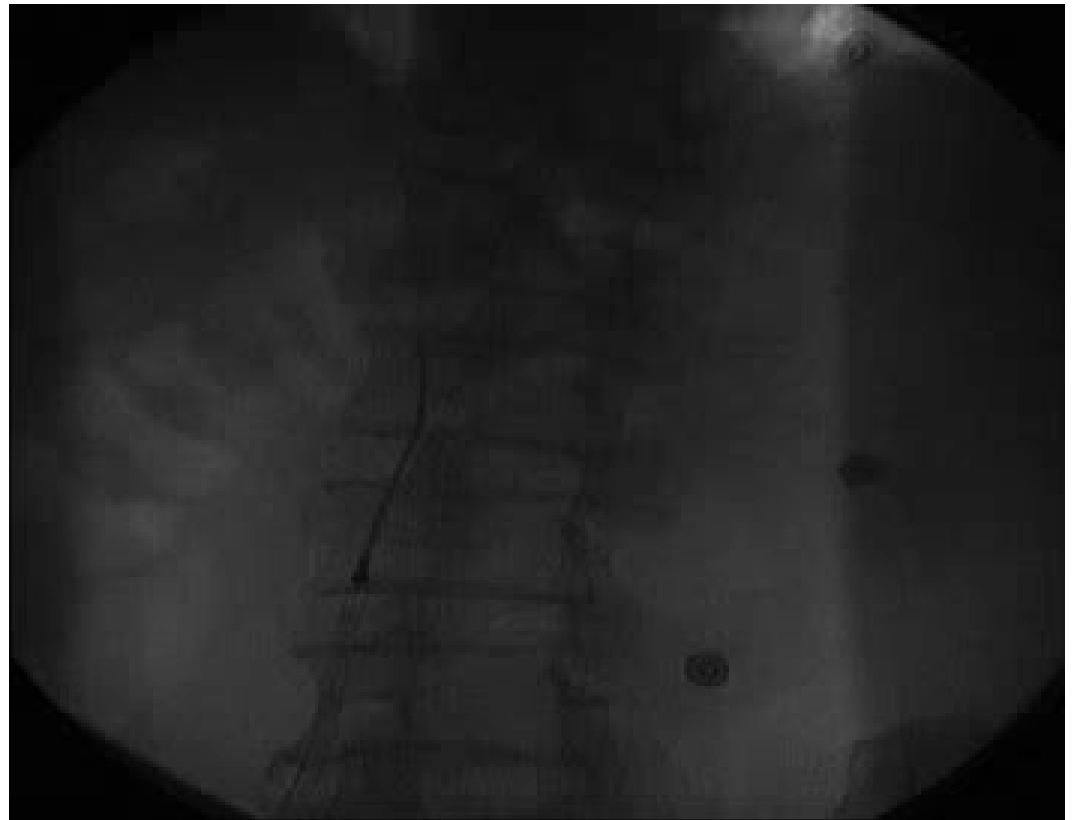
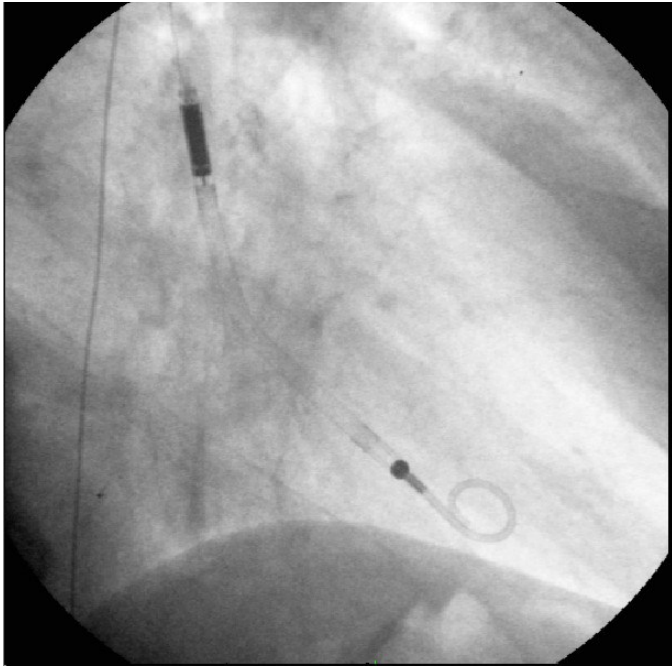


- **Flow: 2.5l/min**
- **5 days support**
- **9F catheter**
- **Percutaneous sheath insertion or femoral cut down**
- **No thoracotomy for explant**





# Implantation Impella LP 2.5



# Control System - Mobile Console

- **Device Flexibility**  
Capable of driving all IMPELLA pumps
- **Patient Transport / Ambulation**  
Battery capacity min. 60 minutes  
(Console: 3 kg)
- **Simple console management**  
Individual adjustable flows
- **Pump status control**  
Pump Position & suction monitoring

