

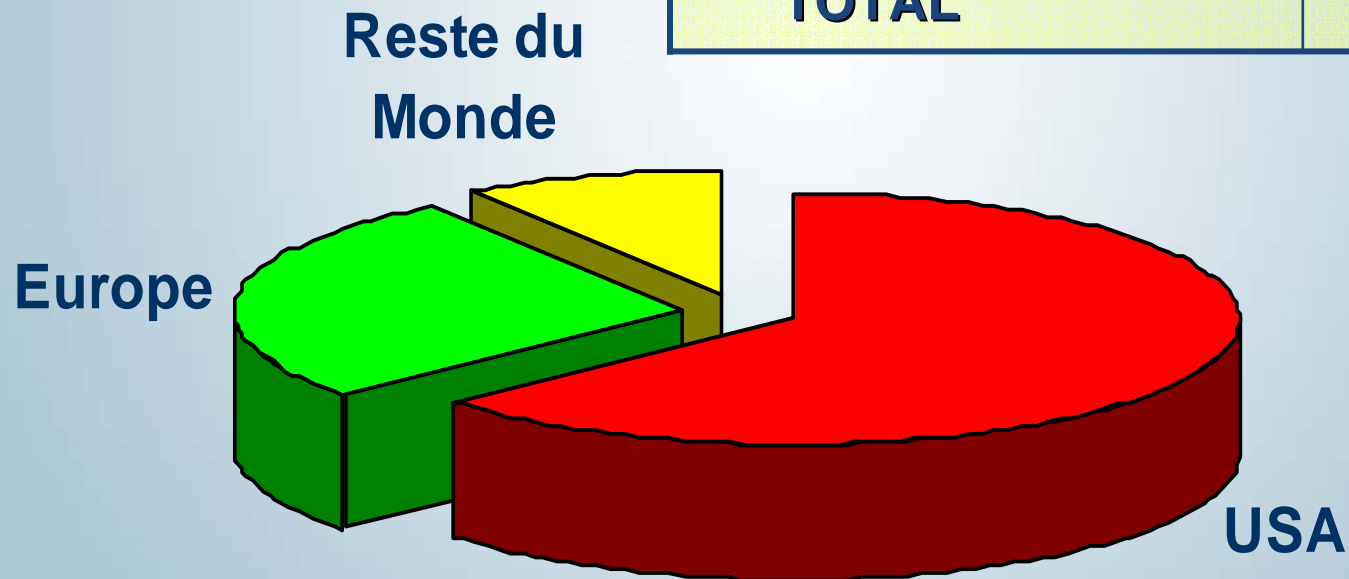
Given Imaging France



Implantation des Stations de Travail

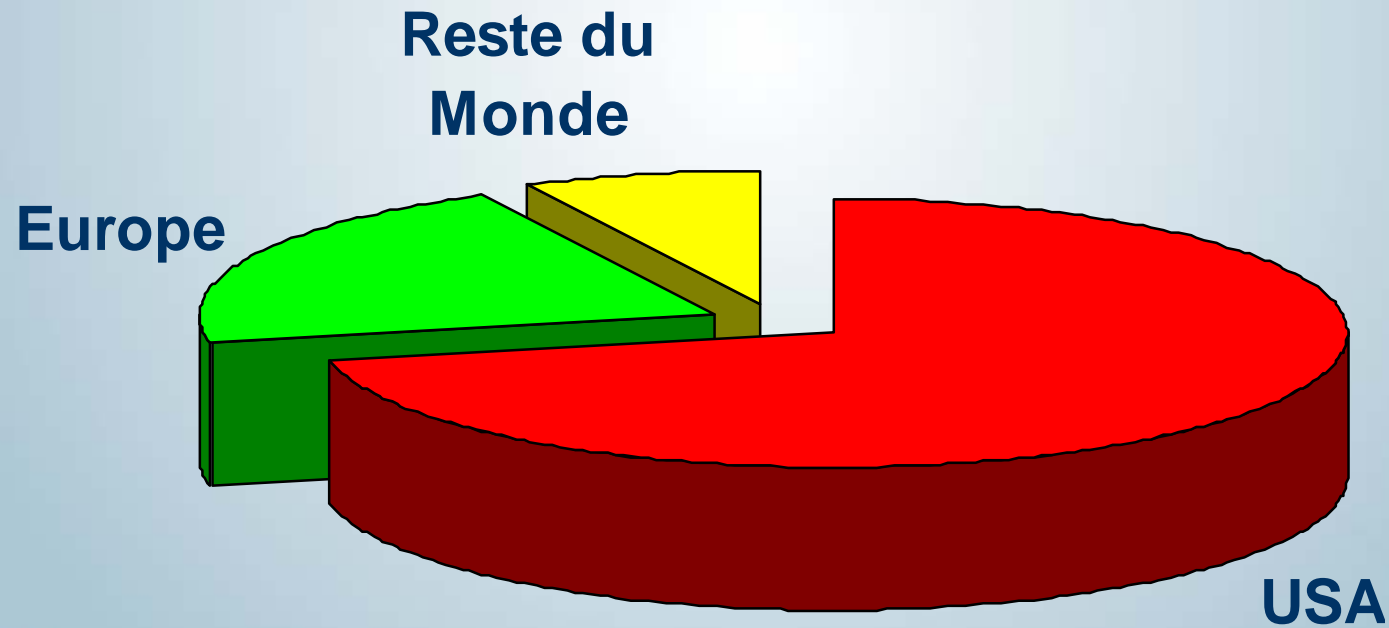


USA	2 000
Europe	850
Reste du Monde	300
TOTAL	3 150

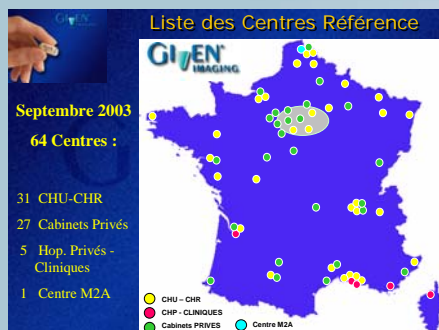


Pillcam SB & ESO ingéres

USA	296 000
Europe	86 900
Reste du Monde	30 680
TOTAL	413 580



Nombre Systèmes en France

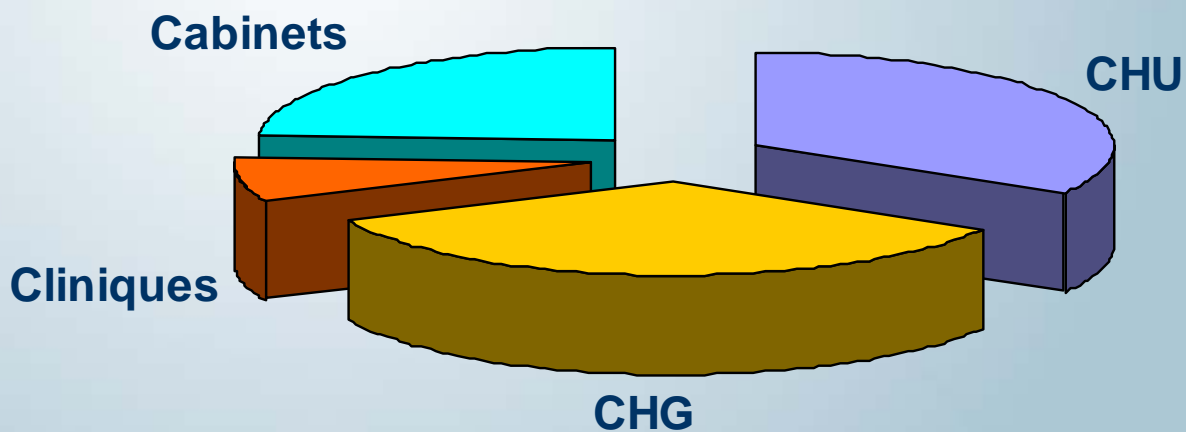


CHU	40
CHG	42
Cliniques	9
Cabinets	29
Station Travail Given Imaging	121




Pillcam® SB

ingérées :

11 000

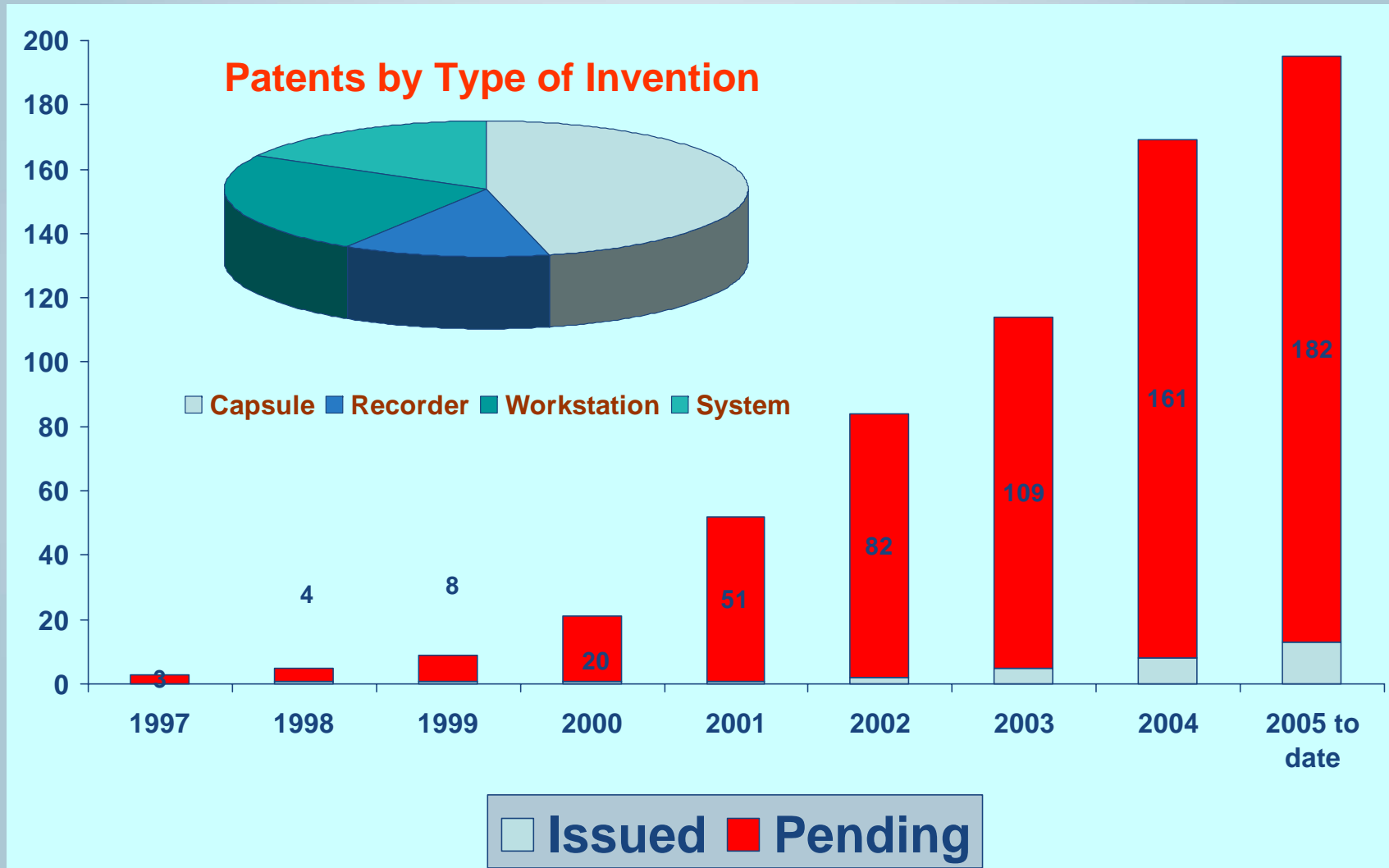


Given Imaging... I' Innovation

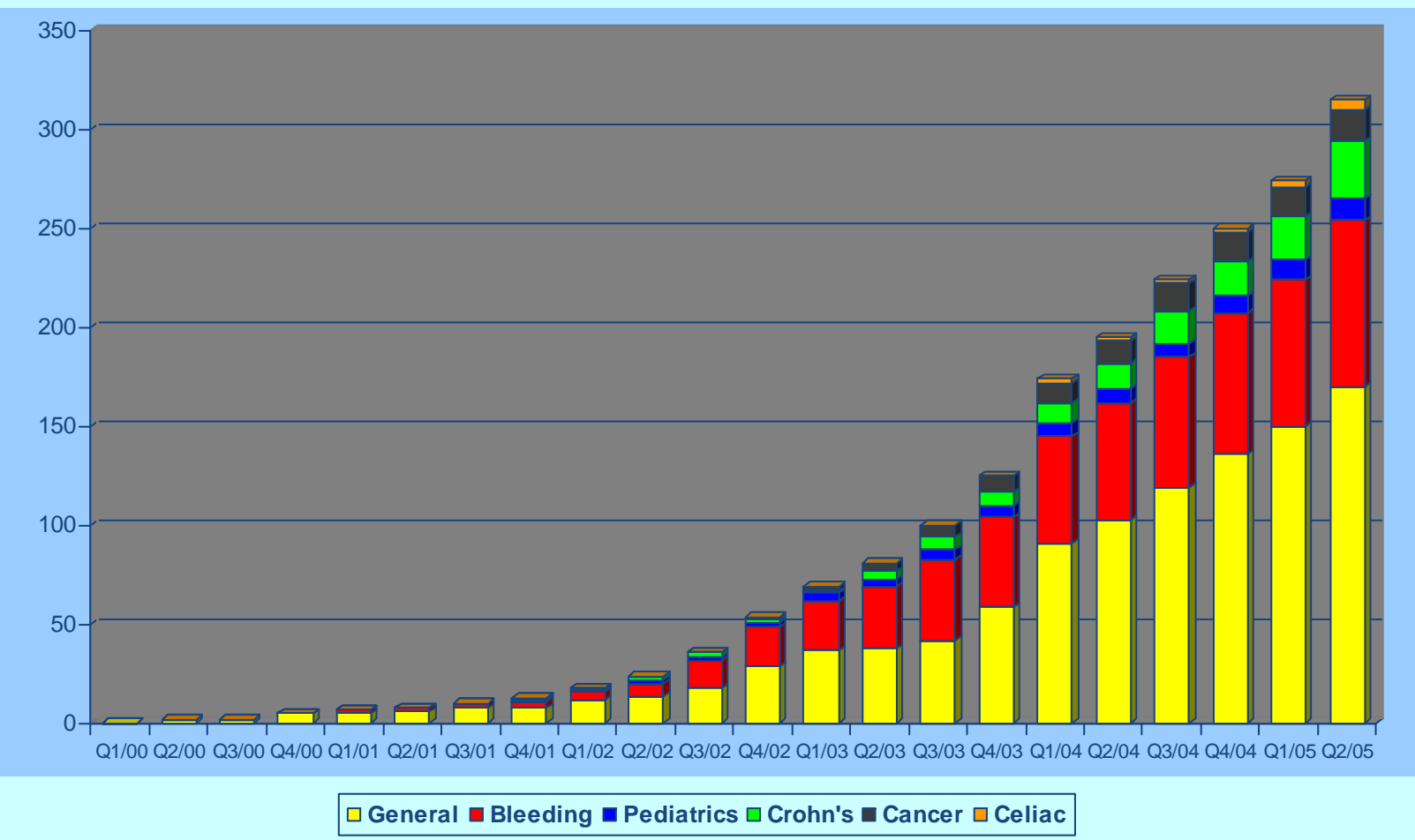
 <p>PillCam™ Video Capsule</p>	<p>PillCam™ SB (1st generation)</p>	<p>PillCam™ SB (2nd generation)</p>	<p>Patency Capsule</p>	<p>PillCam™ SO Pediatric Kit</p>	<p>PillCam™ Colon (Initial Trials)</p>	<p>PillCam™ Colon (Launch) PillCam™ Gastric</p>
 <p>Data Recorder</p>	<p>1.0</p>		<p>1.5 Booster</p>	<p>2.0</p>	<p>RapidAccess</p>	<p>Additional Features for Improved Performance and Efficiencies</p>
 <p>RAPID Workstation</p>	<p>1.0</p> <ul style="list-style-type: none"> Autoview mode 	<p>1.4</p> <ul style="list-style-type: none"> Localization Suspected Bleeding Indicator 	<p>2.0</p> <p>Multi-view</p>	<p>3.0</p> <ul style="list-style-type: none"> Color bar Zoom New reporting Quad View Fast View 	<p>Rapid 4.0</p> <p>Significant Reduction in review time</p>	<p>Performance and Efficiencies</p>
<p>2001</p>	<p>2001</p>	<p>2002</p>	<p>2003</p>	<p>2004</p>	<p>2005</p>	<p>2006 and beyond</p>



Le "portefolio" de Brevets !



Revue Majeures : > 300 publications sur Pillcam® SB

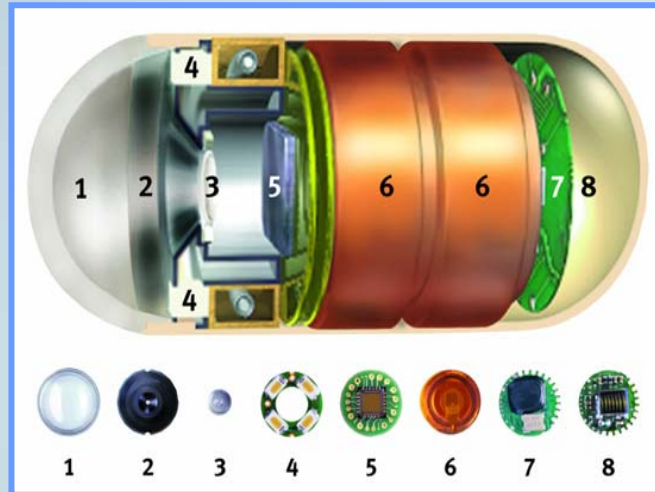


Pillcam® SB



PillCam™ SB (Small Bowel)

Capsule Components



1. **Optical dome**
2. **Lens holder**
3. **Lens**
4. **Illuminating LEDs (light emitting diodes)**
5. **CMOS (Complementary Metal Oxide Semiconductor) image**
6. **Battery**
7. **ASIC (Application Specific Integrated Circuit) transmitter**
8. **Antenna**

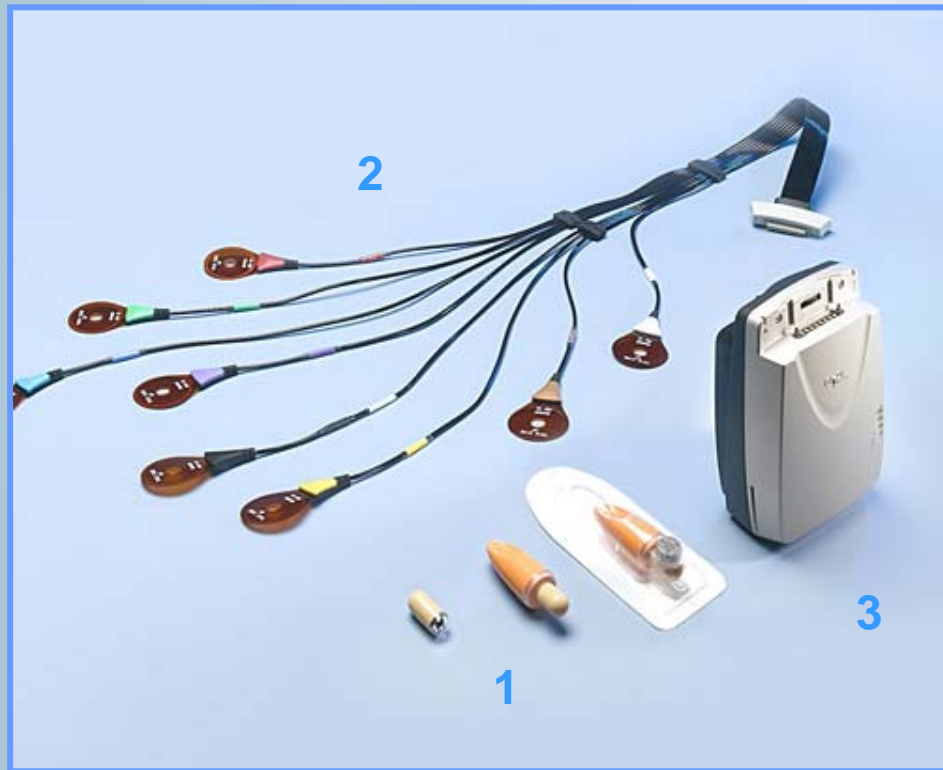


Dimensions:

Diamètre: 11 mm
Longueur: 26 mm
Poids: 3.7gr



PillCam™ SB Exam Set



1. The PillCam™ Capsule
2. SensorArray™ SB
3. Given® DataRecorder™



Images/Indications

PillCam™ SB Video Capsule



Pillcam® Capsule SB

Villosités Normales



Pillcam® Capsule SB

Bleeding



Pillcam® Capsule SB

Crohn



GI

Pillcam® Capsule SB

Coeliac



Pillcam® Capsule SB

Tumeur du Grêle



Pillcam® Capsule SB

AINS



Pillcam® ESO



New procedure

2. Lie on right side, ingest Capsule with sip of water, and stay in right side position

0:00 → 7:00 min



Drink 15 ml sips of water every ~30 sec.

GIVEN[®]
IMAGING

Grainek et al. Endoscopy (in press)

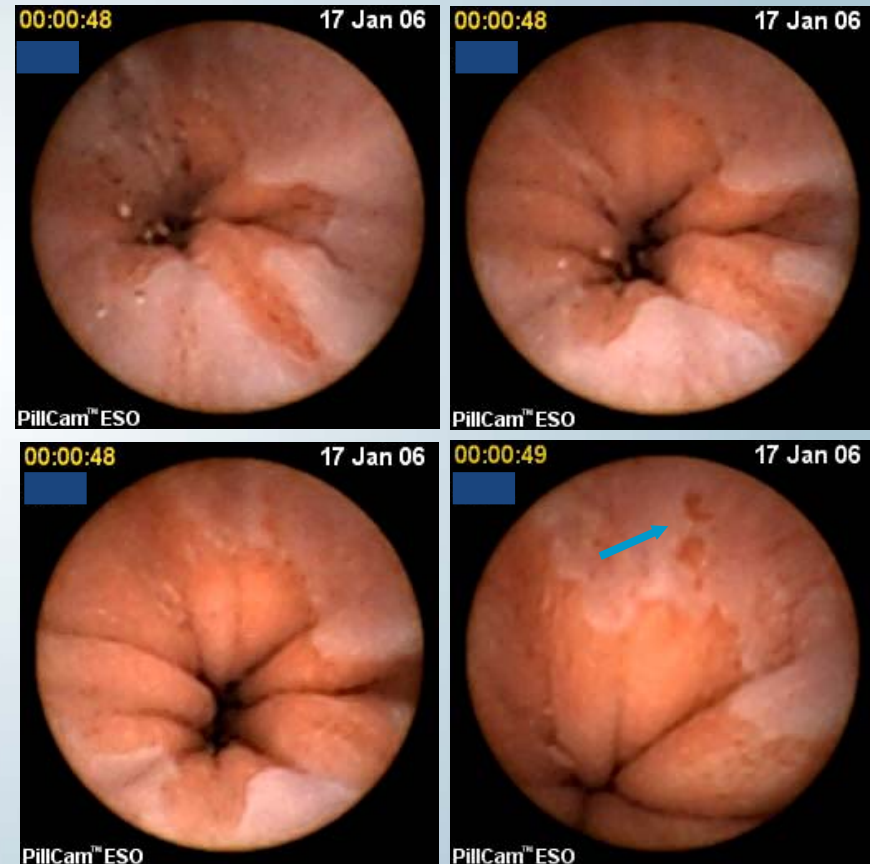
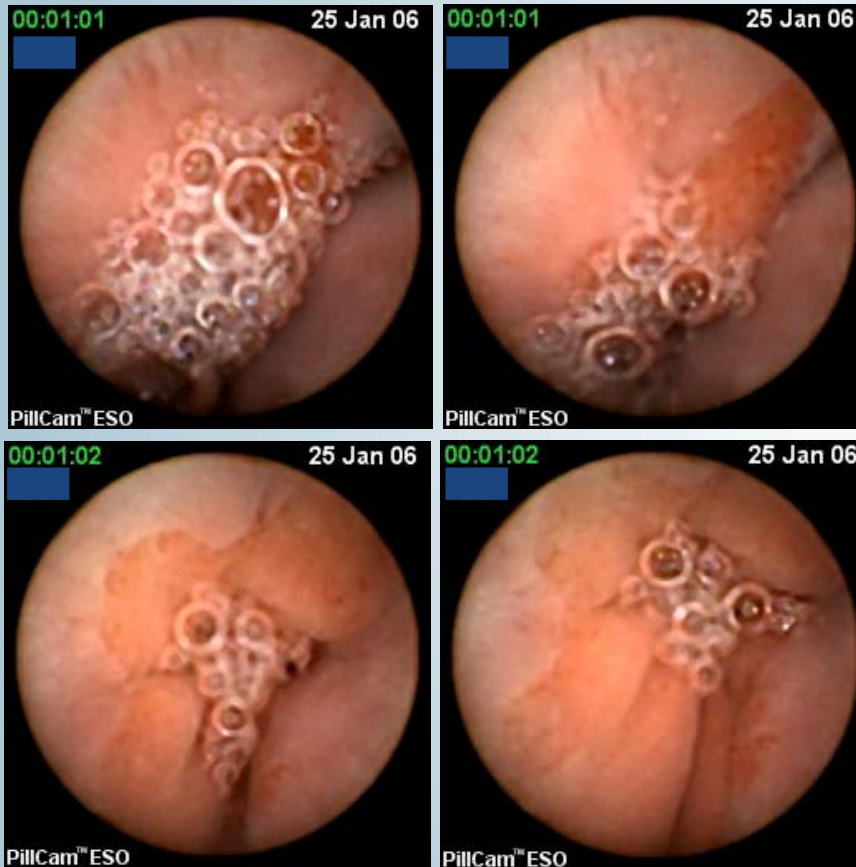
CONFIDENTIAL



Study Images

Original Procedure

New Procedure



TT = 00:13 min

20

CONFIDENTIAL

TT = 00:09 min



RAPID® 4 : Quick View A-Mode

RAPID Atlas
On/Off

QuickView
v4

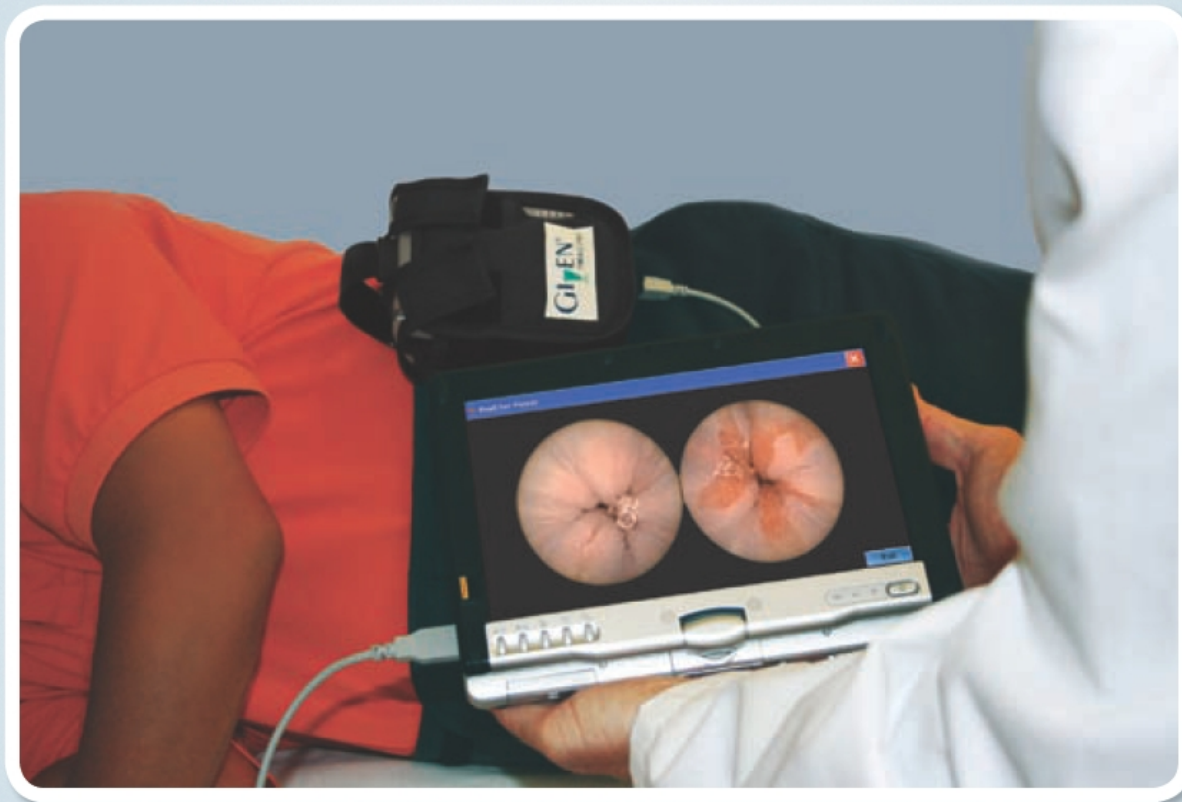
Automatic
Viewing Mode
v4

The screenshot displays the RAPID 4 software interface. At the top, the window title is "RAPID - Physician: Prof. C. Liac - PillCam SB - ID yLXvnm3300". The main area shows two large circular endoscopic views of the colon. A red circle highlights a button in the top right corner. Below the views is a control bar with buttons for "Previous", "View", and "Next", along with a "View speed: 17" indicator. A timeline below the control bar shows a duration of 01:50:13. At the bottom, a "Passage Times" section shows "Gastric 1h 30m" and "SB". A "Quick View" section displays a series of small endoscopic frames with timestamps: 01:30:55 (First Duoden...), 01:39:21 (Normal), 01:47:44 (Normal duod...), 01:50:13 (Normal grossly), 02:02:54 (Normal), and 02:02:54 (Abnd...).



RAPID Access[®]

- Visualisation des images en direct !
- controle vidange gastrique et colique
- Initialisation enregistreur DR2[®]

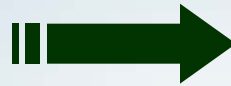


Agile™ Patency Capsule

Procedure Overview



PillCam SB 2 Next Generation



SB

- 11 mm x 26 mm
- 1 camera
- 2 frames per second
- Std optics / 1 lens
- Std lighting control
- Std angle of view 140°
- Depth of field 0-30 mm

SB 2

- 11 mm x 26 mm
- 1 camera
- 2 frames per second
- New optics / 3 lenses
- Advanced Automatic Light Control (ALC)
- Extra-wide Angle of View 156°
- Depth of field 0-30 mm



PillCam SB: PillCam SB 2 Comparison



Angle of View



PillCam SB



PillCam SB 2

156°

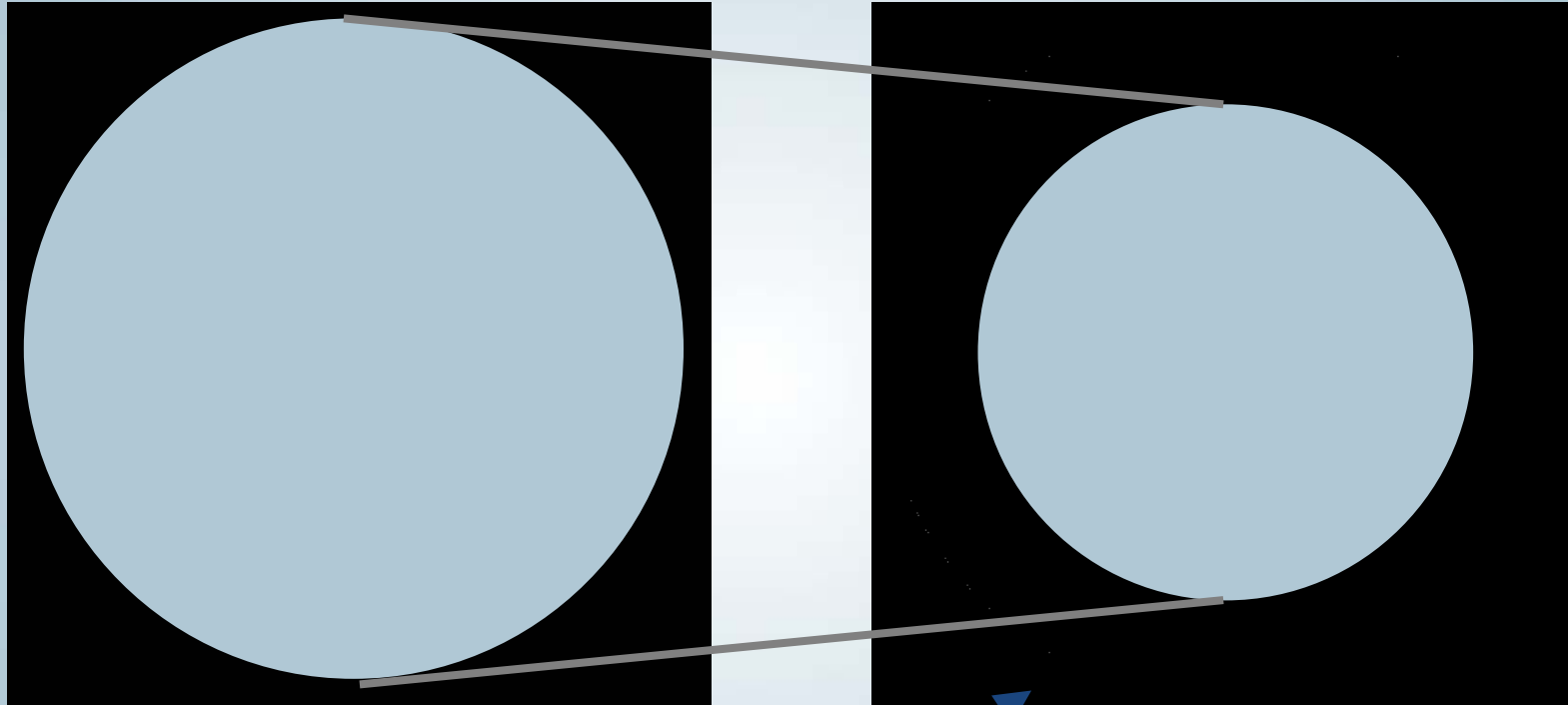
140°
SB 1

Not to scale, for illustration purposes only

25
4.5 mm



Increased Coverage Area



PillCam SB

500 mm²

120% Additional Mucosal Area*

PillCam SB 2

1100 mm²



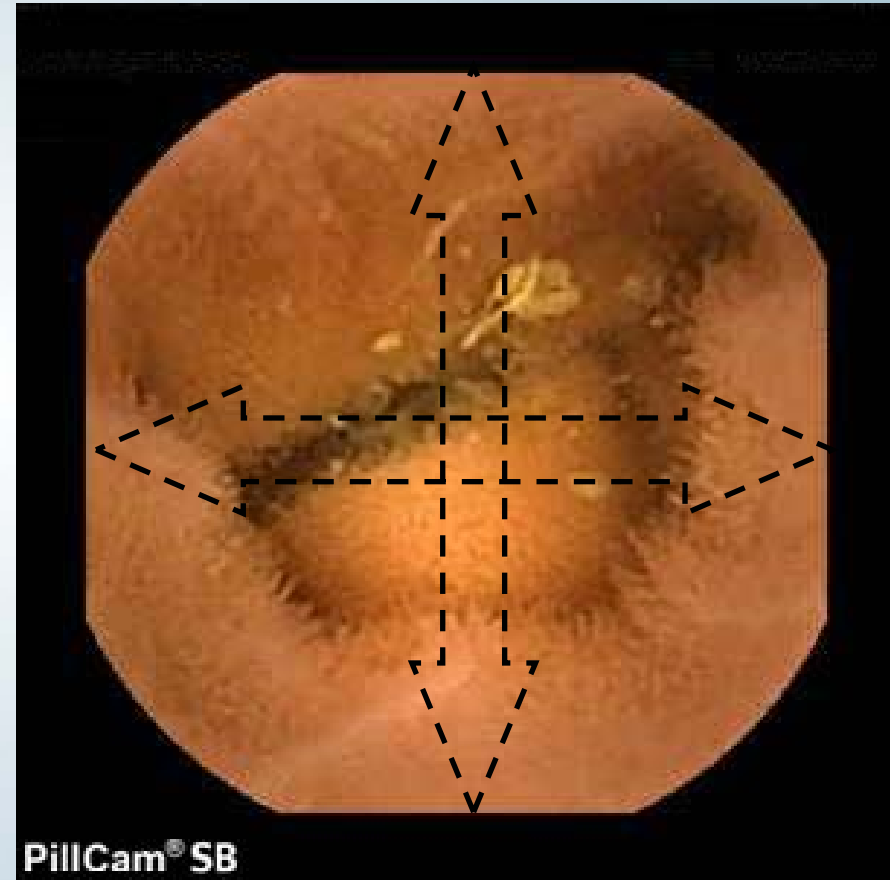
* Flat target, 4.5 mm from dome.



PillCam SB and PillCam SB 2 Increased Angle of View (AOV)



PillCam SB
140° AOV



PillCam SB 2 with ALC and RAPID 5
156° AOV



PillcamTM COLON



PillCam™ Colon

Product Components

- New PillCam design
- 2-sided video cameras
- 4 frames / second
- Optimized optics & illumination control
- 10 hours life time
- Single use



PillCam™ COLON



ICV

Ascending

Transverse

Descending

Rectum



PillCam™ COLON



MERCI !

