

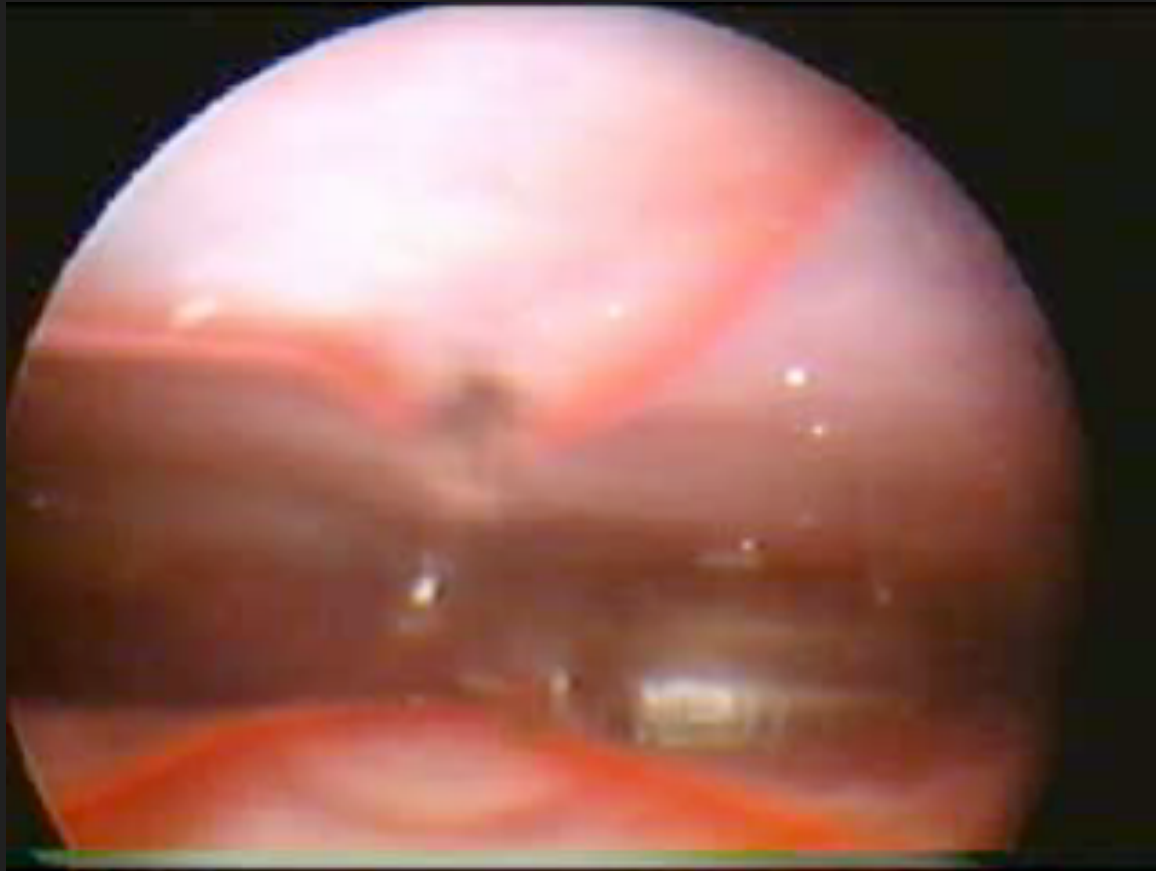
# HeartLander

# HeartLander

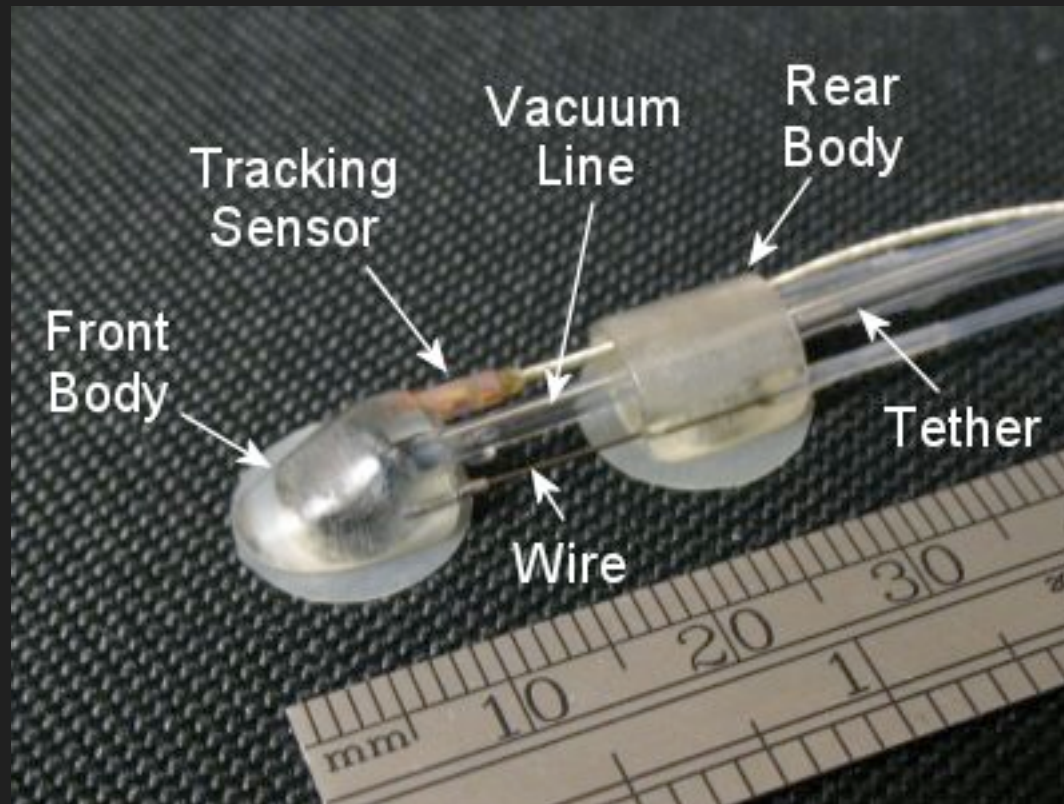


# HeartLander

# HeartLander

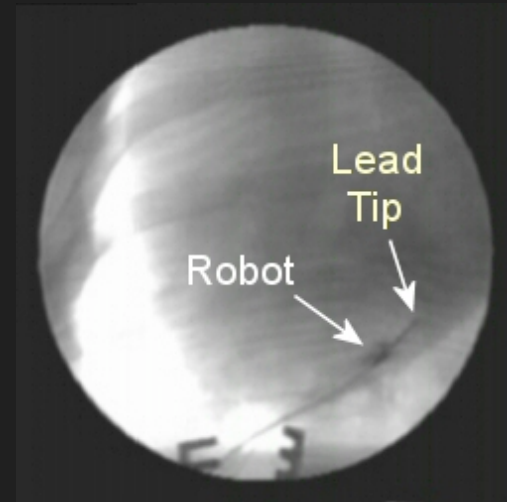


# HeartLander



# Therapy

## Pacemaker Lead Placement



## Myocardial Injection

# HeartLander

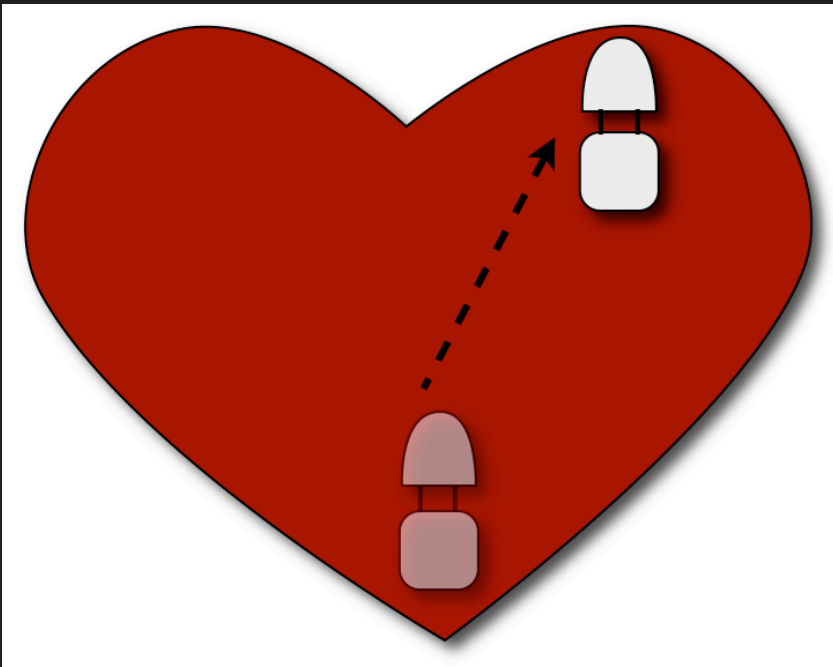
# HeartLander





# Locomotion

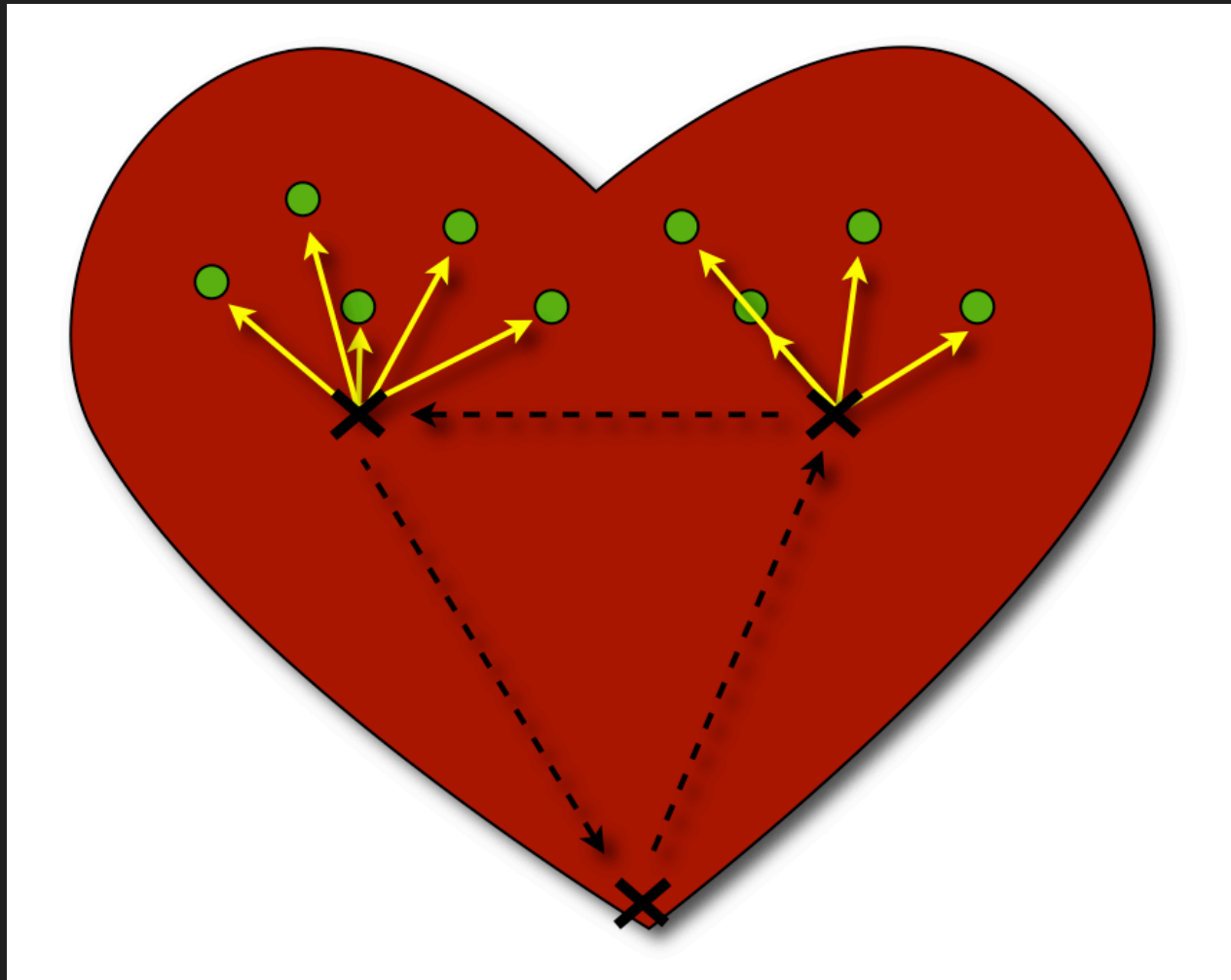
Locomotion



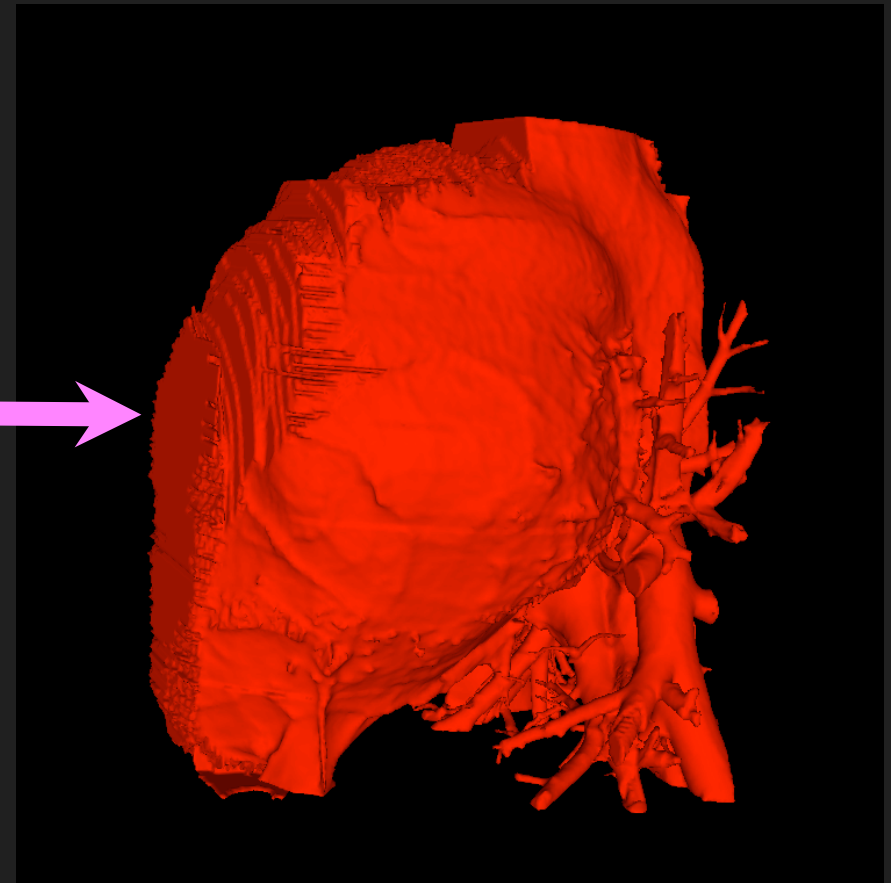
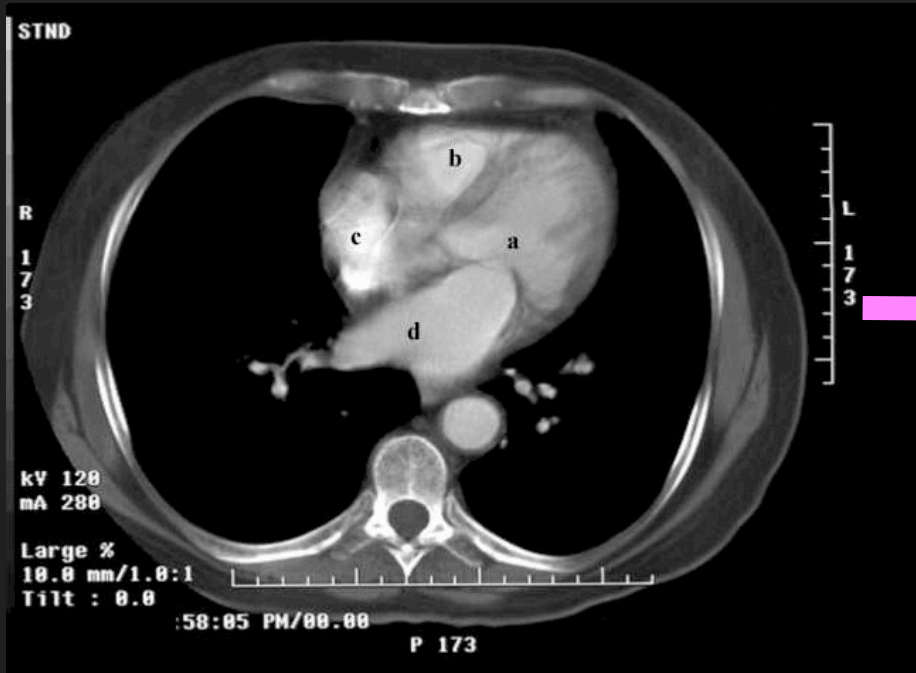
Fine Positioning



# Path Planning



# Visualization



# Conclusion

- No need to collapse lung or stop heart
  - No General Anaesthesia
- Simple design and motion
- Improved visualization with introduction of CT models
- Path Planning takes advantage of both locomotion techniques for semi-autonomous control